

For Research Use Only

SDHA Polyclonal antibody

Catalog Number: 14865-1-AP

Featured Product

86 Publications



Basic Information

Catalog Number: 14865-1-AP	GenBank Accession Number: BC001380	Purification Method: Antigen affinity purification
Size: 150ul , Concentration: 300 µg/ml by Nanodrop and 160 µg/ml by Bradford method using BSA as the standard;	GeneID (NCBI): 6389	Recommended Dilutions: WB 1:5000-1:50000 IP 0.5-4.0 ug for 1.0-3.0 mg of total protein lysate
Source: Rabbit	Full Name: succinate dehydrogenase complex, subunit A, flavoprotein (Fp)	IHC 1:50-1:500 IF 1:200-1:800
Isotype: IgG	Calculated MW: 73 kDa	
Immunogen Catalog Number: AG6677	Observed MW: 62-73 kDa	

Applications

Tested Applications: IF, IHC, IP, WB, ELISA	Positive Controls:
Cited Applications: IF, IHC, IP, WB	WB : HEK-293 cells, HeLa cells, HepG2 cells, mouse brain tissue, rat brain tissue
Species Specificity: human, mouse, rat	IP : HEK-293 cells,
Cited Species: human, rat, mouse, zebrafish, pig	IHC : human liver cancer tissue,
	IF : HepG2 cells,
Note-IHC: suggested antigen retrieval with TE buffer pH 9.0; (*) Alternatively, antigen retrieval may be performed with citrate buffer pH 6.0	

Background Information

SDHA, also named as SDH2, SDHF and Fp, belongs to the FAD-dependent oxidoreductase 2 family and FRD/SDH subfamily. SDHA is the flavoprotein subunit of succinate dehydrogenase (SDH) that is involved in complex II of the mitochondrial electron transport chain and is responsible for transferring electrons from succinate to ubiquinone (coenzyme Q). SDHA has 3 isoforms with the molecular mass of 73, 67 and 57 kDa, and the N-terminal (~5 kDa) can be removed in mature form. It can be detected a band of 68 kDa in cutaneous melanoma(PMID:21698147). SDHA may act as a tumor suppressor.

Notable Publications

Author	Pubmed ID	Journal	Application
Yujie Li	31563988	Arch Toxicol	WB
Yuehong Wang	32918657	Cardiovasc Drugs Ther	WB
DeLong Yin	34497154	Aging (Albany NY)	WB

Storage

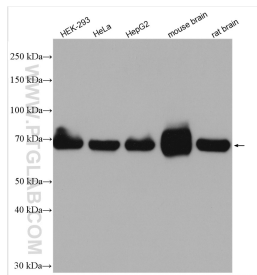
Storage:
Store at -20°C. Stable for one year after shipment.
Storage Buffer:
PBS with 0.02% sodium azide and 50% glycerol pH 7.3.
Aliquoting is unnecessary for -20°C storage

*** 20ul sizes contain 0.1% BSA

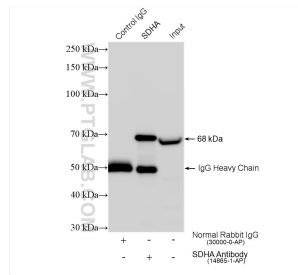
For technical support and original validation data for this product please contact:
T: 1 (888) 4PTGLAB (1-888-478-4522) (toll free in USA), or 1(312) 455-8498 (outside USA)
E: proteintech@ptglab.com
W: ptglab.com

This product is exclusively available under Proteintech Group brand and is not available to purchase from any other manufacturer.

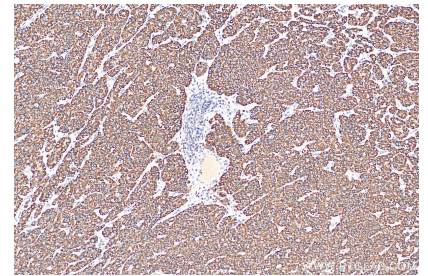
Selected Validation Data



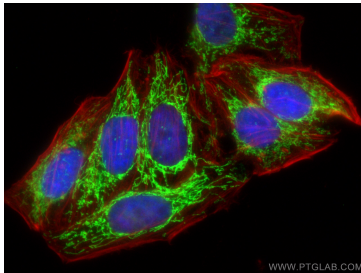
Various lysates were subjected to SDS PAGE followed by western blot with 14865-1-AP (SDHA antibody) at dilution of 1:10000 incubated at room temperature for 1.5 hours.



IP result of anti-SDHA(IP:14865-1-AP, 4ug; Detection:14865-1-AP 1:20000) with HEK-293 cells lysate 960 ug.



Immunohistochemical analysis of paraffin-embedded human liver cancer tissue slide using 14865-1-AP (SDHA antibody) at dilution of 1:200 (under 10x lens). Heat mediated antigen retrieval with Tris-EDTA buffer (pH 9.0).



Immunofluorescent analysis of (4% PFA) fixed HepG2 cells using SDHA antibody (14865-1-AP) at dilution of 1:400 and Coralite® 488-Conjugated AffiniPure Goat Anti-Rabbit IgG(H+L), CL594-phalloidin (red).