

For Research Use Only

# KATNB1 Polyclonal antibody

Catalog Number: 14969-1-AP

Featured Product

11 Publications



## Basic Information

### Catalog Number:

14969-1-AP

### Size:

150ul, Concentration: 450 µg/ml by Nanodrop and 300 µg/ml by Bradford method using BSA as the standard;

### Source:

Rabbit

### Isotype:

IgG

### Immunogen Catalog Number:

AG6836

### GenBank Accession Number:

BC001353

### GeneID (NCBI):

10300

### Full Name:

katanin p80 (WD repeat containing) subunit B 1

### Calculated MW:

72 kDa

### Observed MW:

72-80 kDa

### Purification Method:

Antigen affinity purification

### Recommended Dilutions:

WB 1:1000-1:6000

IP 0.5-4.0 µg for 1.0-3.0 mg of total

protein lysate

IF 1:50-1:500

## Applications

### Tested Applications:

IF, IP, WB, ELISA

### Cited Applications:

IF, WB

### Species Specificity:

human, mouse, rat

### Cited Species:

human, mouse

### Positive Controls:

WB : A431 cells, mouse skeletal muscle tissue, HepG2 cells

IP : HeLa cells,

IF : HeLa cells,

## Background Information

Katanin p80 WD40-containing subunit B1 is a protein that in humans is encoded by the KATNB1 gene. Microtubules, polymers of alpha and beta tubulin subunits, form the mitotic spindle of a dividing cell and help to organize membranous organelles during interphase. Katanin is a heterodimer that consists of a 60 kDa ATPase (p60 subunit A 1) and an 80 kDa accessory protein (p80 subunit B 1). The p60 subunit acts to sever and disassemble microtubules, while the p80 subunit targets the enzyme to the centrosome. Katanin is a member of the AAA family of ATPases.

## Notable Publications

Author	Pubmed ID	Journal	Application
Michael D Chua	31595676	Anat Rec (Hoboken)	
Michael Dominic Chua	30415487	Cell Microbiol	IF
Feng Gao	31185410	Eur J Med Chem	WB

## Storage

### Storage:

Store at -20°C. Stable for one year after shipment.

### Storage Buffer:

PBS with 0.02% sodium azide and 50% glycerol pH 7.3.

Aliquoting is unnecessary for -20°C storage

\*\*\* 20ul sizes contain 0.1% BSA

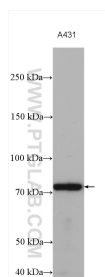
For technical support and original validation data for this product please contact:

T: 1 (888) 4PTGLAB (1-888-478-4522) (toll free in USA), or 1(312) 455-8498 (outside USA)

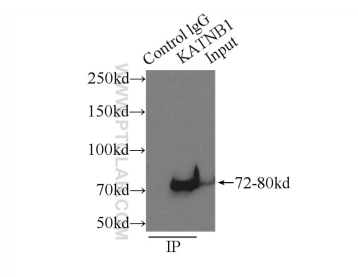
E: [proteintech@ptglab.com](mailto:proteintech@ptglab.com)  
W: [ptglab.com](http://ptglab.com)

This product is exclusively available under Proteintech Group brand and is not available to purchase from any other manufacturer.

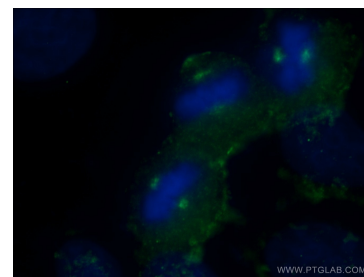
## Selected Validation Data



A431 cells were subjected to SDS PAGE followed by western blot with 14969-1-AP (KATNB1 antibody) at dilution of 1:3000 incubated at room temperature for 1.5 hours.



IP Result of anti-KATNB1 (IP:14969-1-AP, 3ug; Detection:14969-1-AP 1:500) with HeLa cells lysate 3000ug.



Immunofluorescent analysis of (-20°C Ethanol) fixed HeLa cells using 14969-1-AP (KATNB1 antibody) at dilution of 1:50 and Alexa Fluor 488-conjugated AffiniPure Goat Anti-Rabbit IgG(H+L).