

For Research Use Only

# LPCAT2 Polyclonal antibody

Catalog Number: 15082-1-AP

1 Publications



## Basic Information

<b>Catalog Number:</b> 15082-1-AP	<b>GenBank Accession Number:</b> BC002472	<b>Purification Method:</b> Antigen affinity purification
<b>Size:</b> 150ul , Concentration: 350 µg/ml by Nanodrop and 173 µg/ml by Bradford method using BSA as the standard;	<b>GeneID (NCBI):</b> 54947	<b>Recommended Dilutions:</b> WB 1:5000-1:50000 IF 1:200-1:800
<b>Source:</b> Rabbit	<b>Full Name:</b> lysophosphatidylcholine acyltransferase 2	
<b>Isotype:</b> IgG	<b>Calculated MW:</b> 60 kDa	
<b>Immunogen Catalog Number:</b> AG7156	<b>Observed MW:</b> 53 kDa	

## Applications

<b>Tested Applications:</b> IF, WB, ELISA	<b>Positive Controls:</b>
<b>Cited Applications:</b> WB	<b>WB :</b> HEK-293 cells, LPS treated HEK-293, HeLa cells, Jurkat cells, RAW 264.7 cells
<b>Species Specificity:</b> human, mouse, rat	<b>IF :</b> A431 cells,
<b>Cited Species:</b> human	

## Background Information

### Notable Publications

Author	Pubmed ID	Journal	Application
Melanie Merkel	37627584	Antioxidants (Basel)	WB

## Storage

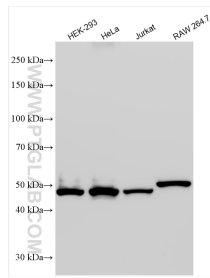
**Storage:**  
Store at -20°C. Stable for one year after shipment.  
**Storage Buffer:**  
PBS with 0.02% sodium azide and 50% glycerol pH 7.3.  
Aliquoting is unnecessary for -20°C storage

\*\*\* 20ul sizes contain 0.1% BSA

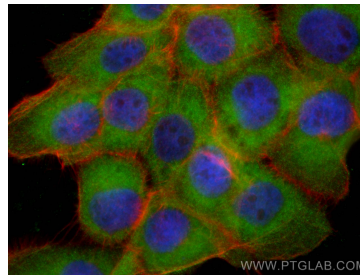
For technical support and original validation data for this product please contact:  
T: 1 (888) 4PTGLAB (1-888-478-4522) (toll free in USA), or 1(312) 455-8498 (outside USA)  
E: [proteintech@ptglab.com](mailto:proteintech@ptglab.com)  
W: [ptglab.com](http://ptglab.com)

This product is exclusively available under Proteintech Group brand and is not available to purchase from any other manufacturer.

## Selected Validation Data



Various lysates were subjected to SDS PAGE followed by western blot with 15082-1-AP (LPCAT2 antibody) at dilution of 1:10000 incubated at room temperature for 1.5 hours.



Immunofluorescent analysis of (-20°C Ethanol) fixed A431 cells using LPCAT2 antibody (15082-1-AP) at dilution of 1:400 and CoraLite® 488-Conjugated AffiniPure Goat Anti-Rabbit IgG(H+L), CL594-Phalloidin (red).