

For Research Use Only

# ANTXR1 Polyclonal antibody

Catalog Number: 15091-1-AP

Featured Product

3 Publications



## Basic Information

<b>Catalog Number:</b> 15091-1-AP	<b>GenBank Accession Number:</b> BC012074	<b>Purification Method:</b> Antigen affinity purification
<b>Size:</b> 150ul , Concentration: 400 µg/ml by Nanodrop and 273 µg/ml by Bradford method using BSA as the standard;	<b>GeneID (NCBI):</b> 84168	<b>Recommended Dilutions:</b> WB 1:500-1:1000 IHC 1:20-1:200 IF 1:50-1:500
<b>Source:</b> Rabbit	<b>Full Name:</b> anthrax toxin receptor 1	
<b>Isotype:</b> IgG	<b>Calculated MW:</b> 63 kDa	
<b>Immunogen Catalog Number:</b> AG4626	<b>Observed MW:</b> 85 kDa, 80 kDa	

## Applications

<b>Tested Applications:</b> IF, IHC, WB, ELISA	<b>Positive Controls:</b> WB : mouse testis tissue, HeLa cells, mouse lung tissue, PC-13 cells
<b>Cited Applications:</b> IHC, WB	<b>IHC :</b> human colon cancer tissue,
<b>Species Specificity:</b> human, mouse, rat	<b>IF :</b> HeLa cells,
<b>Cited Species:</b> human	

**Note-IHC: suggested antigen retrieval with TE buffer pH 9.0; (\*) Alternatively, antigen retrieval may be performed with citrate buffer pH 6.0**

## Background Information

Tumor endothelial marker 8 (TEM8, ANTXR1) and capillary morphogenesis protein 2 (CMG2, ANTXR2) are the two well-characterized anthrax toxin receptors, each containing a von Willebrand factor A (vWA) domain responsible for anthrax protective antigen (PA) binding (PMID: 23271637). TEM8 is a highly-conserved single-pass cell-surface protein overexpressed on tumor-infiltrating vasculature, and is thought to play a positive role in endothelial cell activities related to angiogenesis (PMID: 11559528; 15777794). The long isoforms of TEM8 have been identified as an 80-85 kDa doublet, and experimental deglycosylation reduced the molecular mass to 70 kDa, indicating that TEM8 undergoes multiple glycosylations (PMID: 14871805; 15689409).

## Notable Publications

Author	Pubmed ID	Journal	Application
Yuanchun Li	34285576	Cancer Manag Res	WB
Zhiqiang Dong	34956398	Comput Math Methods Med	WB
Fei Geng	31934301	Am J Transl Res	WB,IHC

## Storage

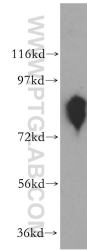
**Storage:**  
Store at -20°C. Stable for one year after shipment.  
**Storage Buffer:**  
PBS with 0.02% sodium azide and 50% glycerol pH 7.3.  
Aliquoting is unnecessary for -20°C storage

\*\*\* 20ul sizes contain 0.1% BSA

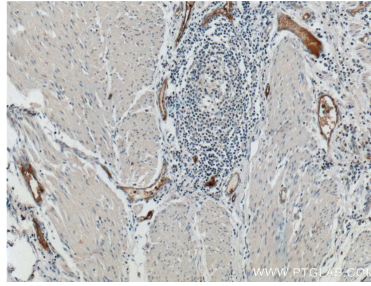
For technical support and original validation data for this product please contact:  
T: 1 (888) 4PTGLAB (1-888-478-4522) (toll free in USA), or 1(312) 455-8498 (outside USA)  
E: proteintech@ptglab.com  
W: ptglab.com

This product is exclusively available under Proteintech Group brand and is not available to purchase from any other manufacturer.

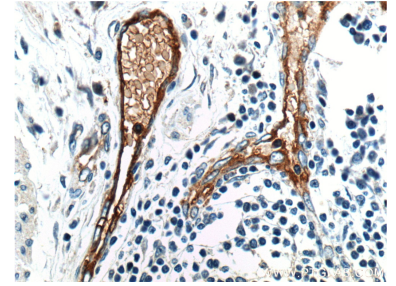
## Selected Validation Data



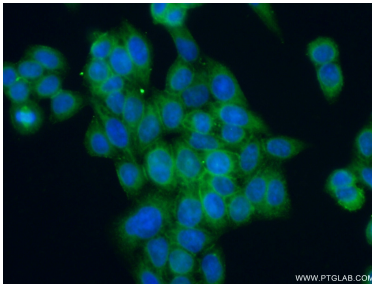
mouse testis tissue were subjected to SDS PAGE followed by western blot with 15091-1-AP (TEM8 antibody) at dilution of 1:500 incubated at room temperature for 1.5 hours.



Immunohistochemical analysis of paraffin-embedded human colon cancer tissue slide using 15091-1-AP (TEM8 antibody at dilution of 1:200 (under 10x lens).



Immunohistochemical analysis of paraffin-embedded human colon cancer tissue slide using 15091-1-AP (TEM8 antibody at dilution of 1:200 (under 40x lens).



Immunofluorescent analysis of (-20°C Ethanol) fixed HeLa cells using 15091-1-AP (TEM8 antibody) at dilution of 1:50 and Alexa Fluor 488-conjugated AffiniPure Goat Anti-Rabbit IgG(H+L).