

For Research Use Only

TFCP2 Polyclonal antibody

Catalog Number: 15203-1-AP

Featured Product

7 Publications



Basic Information

Catalog Number:
15203-1-AP

Size:
150ul, Concentration: 300 µg/ml by Nanodrop and 267 µg/ml by Bradford method using BSA as the standard;

Source:
Rabbit

Isotype:
IgG

Immunogen Catalog Number:
AG7353

GenBank Accession Number:
BC003634

GeneID (NCBI):
7024

Full Name:
transcription factor CP2

Calculated MW:
57 kDa

Observed MW:
66 kDa

Purification Method:
Antigen affinity purification

Recommended Dilutions:
WB 1:500-1:1000
IP 0.5-4.0 ug for IP and 1:250-1:1000 for WB

Applications

Tested Applications:
IP, WB, ELISA

Cited Applications:
IF, IHC, IP, WB

Species Specificity:
human, mouse, rat

Cited Species:
human, mouse

Positive Controls:

WB: mouse spleen tissue, rat spleen tissue, rat brain tissue, mouse kidney tissue, K-562 cells

IP: mouse spleen tissue,

Background Information

TFCP2, also named as SAA3 enhancer factor and transcription factor LSF, is a 502 amino acid protein, which belongs to the grh/CP2 family. TFCP2 is expressed in brain, ovary, kidney, thymus, spleen, liver, adrenal, heart and lung. TFCP2 binds a variety of cellular and viral promoters including fibrinogen, alpha-globin, SV40 and HIV-1 promoters. The calculated molecular weight of TFCP2 is 57 kDa. Similar levels of TFCP2 migrating at 64-66 kDa were evident in all three samples. (PMID: 7828600)

Notable Publications

Author	Pubmed ID	Journal	Application
Dexiang Zhang	34804919	Front Oncol	WB, IHC
Ruyue Fang	35341816	Environ Pollut	WB
Hongkun Cai	35193647	J Exp Clin Cancer Res	WB, IF

Storage

Storage:

Store at -20°C. Stable for one year after shipment.

Storage Buffer:

PBS with 0.02% sodium azide and 50% glycerol pH 7.3.

Aliquoting is unnecessary for -20°C storage

*** 20ul sizes contain 0.1% BSA

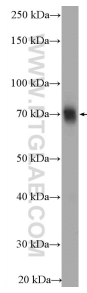
For technical support and original validation data for this product please contact:

T: 1 (888) 4PTGLAB (1-888-478-4522) (toll free in USA), or 1(312) 455-8498 (outside USA)

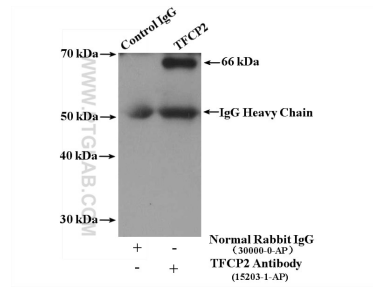
E: proteintech@ptglab.com
W: ptglab.com

This product is exclusively available under Proteintech Group brand and is not available to purchase from any other manufacturer.

Selected Validation Data



mouse spleen tissue were subjected to SDS PAGE followed by western blot with 15203-1-AP (TFCP2 antibody) at dilution of 1:600 incubated at room temperature for 1.5 hours.



IP result of anti-TFCP2 (IP:15203-1-AP, 4ug; Detection:15203-1-AP 1:500) with mouse spleen tissue lysate 4000 ug.