

## CHAC1 Polyclonal antibody

Catalog Number: 15207-1-AP

Featured Product

22 Publications

## Basic Information

<b>Catalog Number:</b> 15207-1-AP	<b>GenBank Accession Number:</b> BC001847	<b>Purification Method:</b> Antigen affinity purification
<b>Size:</b> 150ul , Concentration: 450 µg/ml by Nanodrop;	<b>GeneID (NCBI):</b> 79094	<b>Recommended Dilutions:</b> WB 1:500-1:2000 IHC 1:50-1:500
<b>Source:</b> Rabbit	<b>Full Name:</b> ChaC, cation transport regulator homolog 1 (E. coli)	
<b>Isotype:</b> IgG	<b>Calculated MW:</b> 24 kDa	
<b>Immunogen Catalog Number:</b> AG7360	<b>Observed MW:</b> 38 kDa	

## Applications

<b>Tested Applications:</b> IHC, WB, ELISA	<b>Positive Controls:</b>
<b>Cited Applications:</b> CoIP, IF, IHC, WB	<b>WB :</b> HeLa cells, A549 cells, CHO cells, U-251 cells, C6 cells, RAW 264.7 cells
<b>Species Specificity:</b> human, mouse, rat, hamster	<b>IHC :</b> human stomach tissue,
<b>Cited Species:</b> human, mouse	

**Note-IHC: suggested antigen retrieval with TE buffer pH 9.0; (\*) Alternatively, antigen retrieval may be performed with citrate buffer pH 6.0**

## Background Information

CHAC1(Cation transport regulator-like protein 1) was identified in a co-regulated group of genes enriched for components of the ATF4 (activating transcription factor 4) arm of the unfolded protein response pathway. CHAC1 is a proapoptotic ER stress protein downstream of the pancreatic EIF2α kinase-ATF4 pathway that appears to be important for human physiology and disease(PMID: 19109178). In addition, the study found that high CHAC1 expression is associated with a bad prognosis hinting that CHAC1 may have a possible prognostic significance in breast cancer(PMID: 35930144). The predicted molecular weight of CHAC1 is 24 kDa, and the molecular weight detected by Proteintech is 38 kDa.

## Notable Publications

Author	Pubmed ID	Journal	Application
Xiong Yuyun	32910715	Innate Immun	WB
Xiaoli Zhang	34688836	Free Radic Biol Med	WB
Deng Li	33728749	J Cell Mol Med	WB,IHC

## Storage

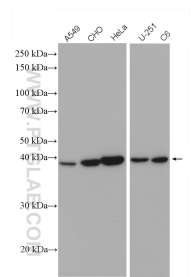
**Storage:**  
Store at -20°C. Stable for one year after shipment.  
**Storage Buffer:**  
PBS with 0.02% sodium azide and 50% glycerol pH 7.3.  
 Aliquoting is unnecessary for -20°C storage

\*\*\* 20ul sizes contain 0.1% BSA

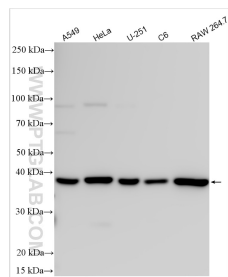
For technical support and original validation data for this product please contact:  
 T: 1 (888) 4PTGLAB (1-888-478-4522) (toll free in USA), or 1(312) 455-8498 (outside USA)  
 E: [proteintech@ptglab.com](mailto:proteintech@ptglab.com)  
 W: [ptglab.com](http://ptglab.com)

This product is exclusively available under Proteintech Group brand and is not available to purchase from any other manufacturer.

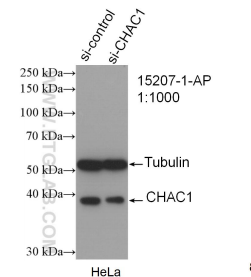
Selected Validation Data



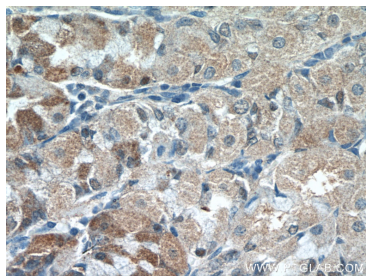
Various lysates were subjected to SDS PAGE followed by western blot with 15207-1-AP (CHAC1 antibody) at dilution of 1:600 incubated at room temperature for 1.5 hours.



Various lysates were subjected to SDS PAGE followed by western blot with 15207-1-AP (CHAC1 antibody) at dilution of 1:1000 incubated at room temperature for 1.5 hours.



WB result of CHAC1 antibody (15207-1-AP; 1:1000; incubated at room temperature for 1.5 hours) with sh-Control and sh-CHAC1 transfected HeLa cells.



Immunohistochemical analysis of paraffin-embedded human stomach tissue slide using 15207-1-AP (CHAC1 antibody) at dilution of 1:200 (under 10x lens).