

For Research Use Only

# RCL1 Polyclonal antibody

Catalog Number: 15330-1-AP **2 Publications**



## Basic Information

<b>Catalog Number:</b> 15330-1-AP	<b>GenBank Accession Number:</b> BC001025	<b>Purification Method:</b> Antigen affinity purification
<b>Size:</b> 150ul , Concentration: 500 µg/ml by Nanodrop and 333 µg/ml by Bradford method using BSA as the standard;	<b>GeneID (NCBI):</b> 10171	<b>Recommended Dilutions:</b> WB 1:500-1:2000 IF 1:10-1:100
<b>Source:</b> Rabbit	<b>Full Name:</b> RNA terminal phosphate cyclase-like 1	
<b>Isotype:</b> IgG	<b>Calculated MW:</b> 41 kDa	
<b>Immunogen Catalog Number:</b> AG7058	<b>Observed MW:</b> 41 kDa	

## Applications

<b>Tested Applications:</b> IF, WB, ELISA	<b>Positive Controls:</b> WB : A431 cells, HepG2 cells, A375 cells, MCF-7 cells
<b>Cited Applications:</b> IF, WB	<b>IF :</b> A375 cells,
<b>Species Specificity:</b> human, mouse, rat	
<b>Cited Species:</b> human	

## Background Information

### Notable Publications

Author	Pubmed ID	Journal	Application
Yu Jiaze	35264160	Cancer Cell Int	WB, IF
Yong Wang	37451810	J Mol Cell Biol	WB, IF

## Storage

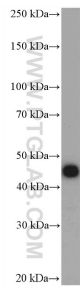
**Storage:**  
Store at -20°C. Stable for one year after shipment.  
**Storage Buffer:**  
PBS with 0.02% sodium azide and 50% glycerol pH 7.3.  
Aliquoting is unnecessary for -20°C storage

**\*\*\* 20ul sizes contain 0.1% BSA**

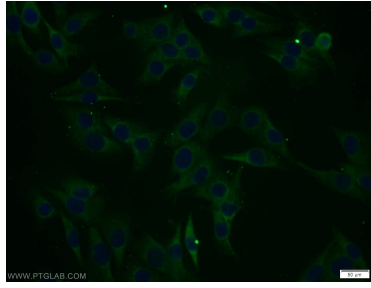
For technical support and original validation data for this product please contact:  
T: 1 (888) 4PTGLAB (1-888-478-4522) (toll free in USA), or 1(312) 455-8498 (outside USA)  
E: proteintech@ptglab.com  
W: ptglab.com

**This product is exclusively available under Proteintech Group brand and is not available to purchase from any other manufacturer.**

## Selected Validation Data



A431 cells were subjected to SDS PAGE followed by western blot with 15330-1-AP (RCL1 antibody) at dilution of 1:1000 incubated at room temperature for 1.5 hours.



Immunofluorescent analysis of A375 cells using 15330-1-AP (RCL1 antibody) at dilution of 1:25 and Alexa Fluor 488-conjugated AffiniPure Goat Anti-Rabbit IgG(H+L).