

For Research Use Only

PAF1 Polyclonal antibody

Catalog Number: 15441-1-AP

Featured Product

7 Publications



Basic Information

Catalog Number:

15441-1-AP

Size:

150ul, Concentration: 600 µg/ml by Nanodrop and 240 µg/ml by Bradford method using BSA as the standard;

Source:

Rabbit

Isotype:

IgG

Immunogen Catalog Number:

AG7212

GenBank Accession Number:

BC000017

GeneID (NCBI):

54623

Full Name:

Paf1, RNA polymerase II associated factor, homolog (S. cerevisiae)

Calculated MW:

60 kDa

Observed MW:

80 kDa

Purification Method:

Antigen affinity purification

Recommended Dilutions:

WB 1:500-1:2000

IP 0.5-4.0 µg for 1.0-3.0 mg of total

protein lysate

IHC 1:50-1:500

Applications

Tested Applications:

IHC, IP, WB, ELISA

Cited Applications:

WB

Species Specificity:

human

Cited Species:

human

Positive Controls:

WB: HepG2 cells, HeLa cells

IP: HeLa cells,

IHC: human ovary tumor tissue, human liver cancer tissue

Note-IHC: suggested antigen retrieval with TE buffer pH 9.0; (*) Alternatively, antigen retrieval may be performed with citrate buffer pH 6.0

Background Information

PAF1, also known as hPAF1 or PD2, is a PAF (RNA Polymerase II Associated Factor) complex subunit. Paf1 functions primarily to modulate transcript elongation. PAF1 occupies transcriptional enhancers and restrains hyperactivation of a subset of these enhancers (PMID: 28860207). The PAF complex also has a role in histone monoubiquitination. Paf1 is overexpressed in pancreatic cancer cells and has demonstrated potential oncogenic property. The MW of this protein is 80 kDa, and this antibody specially recognises the 80 kDa protein.

Notable Publications

Author	Pubmed ID	Journal	Application
Liangde Zheng	31525119	Autophagy	WB
Chen Chen	34499080	J Cell Biol	WB
Jing-Jie Zheng	32471508	Radiat Oncol	WB

Storage

Storage:

Store at -20°C. Stable for one year after shipment.

Storage Buffer:

PBS with 0.02% sodium azide and 50% glycerol pH 7.3.

Aliquoting is unnecessary for -20°C storage

*** 20ul sizes contain 0.1% BSA

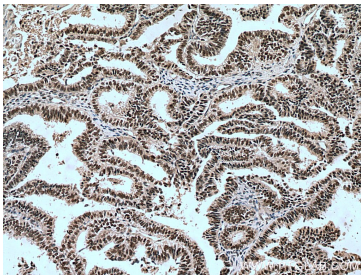
For technical support and original validation data for this product please contact:

T: 1 (888) 4PTGLAB (1-888-478-4522) (toll free in USA), or 1(312) 455-8498 (outside USA)

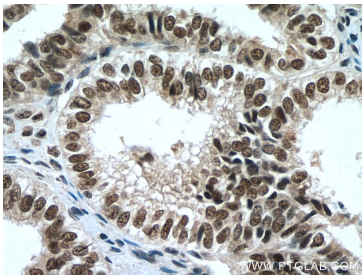
E: proteintech@ptglab.com
W: ptglab.com

This product is exclusively available under Proteintech Group brand and is not available to purchase from any other manufacturer.

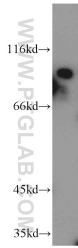
Selected Validation Data



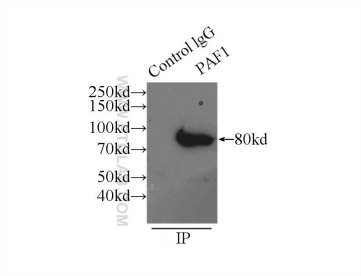
Immunohistochemical analysis of paraffin-embedded human ovary tumor tissue slide using 15441-1-AP (PAF1 antibody) at dilution of 1:200 (under 10x lens). Heat mediated antigen retrieval with Tris-EDTA buffer (pH 9.0).



Immunohistochemical analysis of paraffin-embedded human ovary tumor tissue slide using 15441-1-AP (PAF1 antibody) at dilution of 1:200 (under 40x lens). Heat mediated antigen retrieval with Tris-EDTA buffer (pH 9.0).



HepG2 cells were subjected to SDS PAGE followed by western blot with 15441-1-AP (PAF1 antibody) at dilution of 1:1000 incubated at room temperature for 1.5 hours.



IP Result of anti-PAF1 (IP:15441-1-AP, 3ug; Detection:15441-1-AP 1:1000) with HeLa cells lysate 3000ug.