

For Research Use Only

# XPNPEP3 Polyclonal antibody

Catalog Number: 15655-1-AP



## Basic Information

<b>Catalog Number:</b> 15655-1-AP	<b>GenBank Accession Number:</b> BC004989	<b>Purification Method:</b> Antigen affinity purification
<b>Size:</b> 150ul , Concentration: 500 µg/ml by Nanodrop and 147 µg/ml by Bradford method using BSA as the standard;	<b>GeneID (NCBI):</b> 63929	<b>Recommended Dilutions:</b> WB 1:1000-1:8000 IP 0.5-4.0 ug for IP and 1:200-1:1000 for WB
<b>Source:</b> Rabbit	<b>Full Name:</b> X-prolyl aminopeptidase (aminopeptidase P) 3, putative	<b>IHC 1:20-1:200</b>
<b>Isotype:</b> IgG	<b>Calculated MW:</b> 57 kDa	
<b>Immunogen Catalog Number:</b> AG8007	<b>Observed MW:</b> 57 kDa	

## Applications

### Tested Applications:

IHC, IP, WB, ELISA

### Species Specificity:

human, mouse, rat

**Note-IHC: suggested antigen retrieval with TE buffer pH 9.0; (\*) Alternatively, antigen retrieval may be performed with citrate buffer pH 6.0**

### Positive Controls:

**WB:** A431 cells, human testis tissue, human spleen tissue, PC-3 cells, 4T1 cells, mouse liver

**IP:** PC-3 cells,

**IHC:** human lung cancer tissue, human oesophagus tissue

## Background Information

XPNPEP3 gene encodes X-prolyl aminopeptidase 3 which functions to remove the penultimate N-terminal Proline residue from nascent proteins and appears to play a role in ciliary function. CRC tissue microarray revealed increased XPNPEP3 expression in tumor compared to matched normal samples (PMID:29383790). Other study found that XPNPEP3 localizes to mitochondria in renal cells in vitro and to kidney tubules in a cell type-specific pattern, and mutations in the gene are associated with NPHP-like disorder (PMID:20179356).

## Storage

### Storage:

Store at -20°C. Stable for one year after shipment.

### Storage Buffer:

PBS with 0.02% sodium azide and 50% glycerol pH 7.3.

Aliquoting is unnecessary for -20°C storage

**\*\*\* 20ul sizes contain 0.1% BSA**

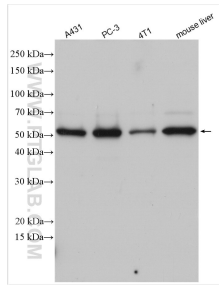
For technical support and original validation data for this product please contact:

T: 1 (888) 4PTGLAB (1-888-478-4522) (toll free in USA), or 1(312) 455-8498 (outside USA)

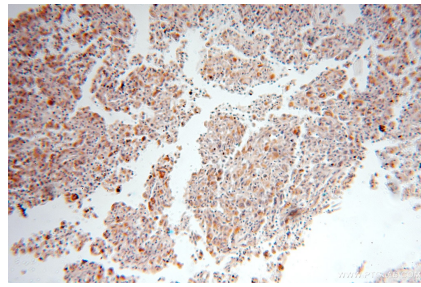
E: proteintech@ptglab.com  
W: ptglab.com

**This product is exclusively available under Proteintech Group brand and is not available to purchase from any other manufacturer.**

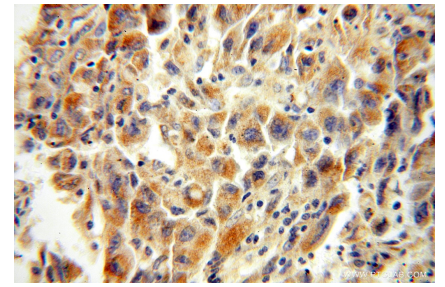
## Selected Validation Data



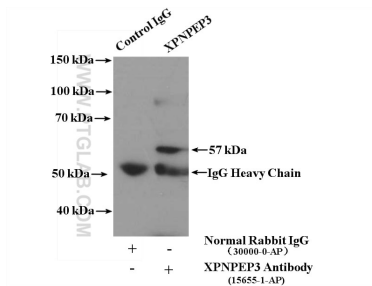
Various lysates were subjected to SDS PAGE followed by western blot with 15655-1-AP (XPNPEP3 antibody) at dilution of 1:4000 incubated at room temperature for 1.5 hours.



Immunohistochemical analysis of paraffin-embedded human lung cancer using 15655-1-AP (XPNPEP3 antibody) at dilution of 1:100 (under 10x lens).



Immunohistochemical analysis of paraffin-embedded human lung cancer using 15655-1-AP (XPNPEP3 antibody) at dilution of 1:100 (under 40x lens).



IP Result of anti-XPNPEP3 (IP:15655-1-AP, 4ug; Detection:15655-1-AP 1:400) with PC-3 cells lysate 2000ug.