

For Research Use Only

PYGL Polyclonal antibody

Catalog Number: 15851-1-AP

Featured Product

34 Publications



Basic Information

Catalog Number:

15851-1-AP

Size:

150ul, Concentration: 500 µg/ml by Nanodrop and 333 µg/ml by Bradford method using BSA as the standard;

Source:

Rabbit

Isotype:

IgG

Immunogen Catalog Number:

AG8664

GenBank Accession Number:

BC009895

GeneID (NCBI):

5836

UNIPROT ID:

P06737

Full Name:

phosphorylase, glycogen, liver

Calculated MW:

846 aa, 97 kDa

Observed MW:

97 kDa

Purification Method:

Antigen affinity purification

Recommended Dilutions:

WB 1:500-1:3000

IP 0.5-4.0 µg for 1.0-3.0 mg of total protein lysate

IHC 1:50-1:500

IF 1:200-1:800

Applications

Tested Applications:

IF, IHC, IP, WB, ELISA

Cited Applications:

IF, IHC, IP, WB

Species Specificity:

human, mouse, rat

Cited Species:

human, rat, mouse, squirrel

Note-IHC: suggested antigen retrieval with TE buffer pH 9.0; (*) Alternatively, antigen retrieval may be performed with citrate buffer pH 6.0

Positive Controls:

WB : HeLa cells, HepG2 cells, mouse liver, rat liver

IP : mouse liver tissue,

IHC : human kidney tissue, mouse heart tissue, mouse testis tissue

IF : HeLa cells,

Background Information

Notable Publications

Author	Pubmed ID	Journal	Application
Teresa W-M Fan	36150727	J Immunol	
Zejian Liu	36063868	Metabolism	WB
Katarzyna Figlak	34675331	Sci Rep	WB,IF

Storage

Storage:

Store at -20°C. Stable for one year after shipment.

Storage Buffer:

PBS with 0.02% sodium azide and 50% glycerol pH 7.3.

Aliquoting is unnecessary for -20°C storage

*** 20ul sizes contain 0.1% BSA

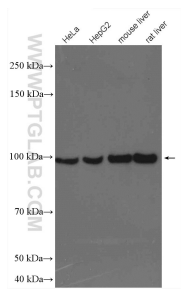
For technical support and original validation data for this product please contact:

T: 1 (888) 4PTGLAB (1-888-478-4522) (toll free in USA), or 1(312) 455-8498 (outside USA)

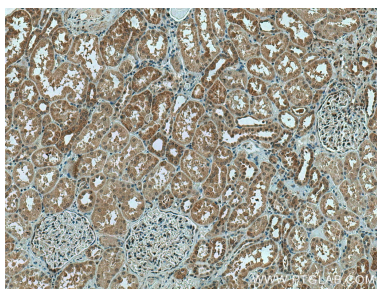
E: proteintech@ptglab.com
W: ptglab.com

This product is exclusively available under Proteintech Group brand and is not available to purchase from any other manufacturer.

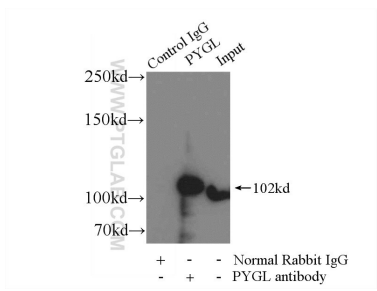
Selected Validation Data



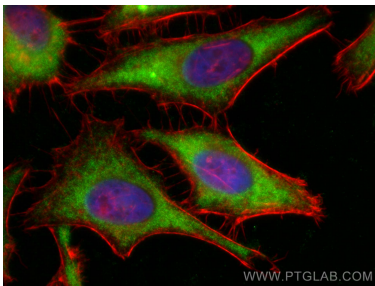
Various lysates were subjected to SDS PAGE followed by western blot with 15851-1-AP (PYGL antibody) at dilution of 1:1500 incubated at room temperature for 1.5 hours.



Immunohistochemical analysis of paraffin-embedded human kidney tissue slide using 15851-1-AP (PYGL antibody) at dilution of 1:200 (under 10x lens). Heat mediated antigen retrieval with Tris-EDTA buffer (pH 9.0).



IP result of anti-PYGL (IP:15851-1-AP, 4ug; Detection:15851-1-AP 1:1000) with mouse liver tissue lysate 4000ug.



Immunofluorescent analysis of (-20°C Ethanol) fixed HeLa cells using PYGL antibody (15851-1-AP) at dilution of 1:400 and CoraLite®488-Conjugated AffiniPure Goat Anti-Rabbit IgG(H+L), CL594-phalloidin (red).