

For Research Use Only

# LYPLA1 Polyclonal antibody

Catalog Number: 16055-1-AP **6 Publications**



## Basic Information

<b>Catalog Number:</b> 16055-1-AP	<b>GenBank Accession Number:</b> BC010397	<b>Purification Method:</b> Antigen affinity purification
<b>Size:</b> 150ul , Concentration: 400 µg/ml by Nanodrop and 300 µg/ml by Bradford method using BSA as the standard;	<b>GeneID (NCBI):</b> 10434	<b>Recommended Dilutions:</b> WB 1:1000-1:4000 IP 0.5-4.0 ug for IP and 1:500-1:1000 for WB
<b>Source:</b> Rabbit	<b>Full Name:</b> lysophospholipase I	<b>IHC 1:50-1:500</b>
<b>Isotype:</b> IgG	<b>Calculated MW:</b> 230 aa, 25 kDa	<b>IF 1:50-1:500</b>
<b>Immunogen Catalog Number:</b> AG9022	<b>Observed MW:</b> 25 kDa	

## Applications

<b>Tested Applications:</b> IF, IHC, IP, WB, ELISA	<b>Positive Controls:</b>
<b>Cited Applications:</b> IHC, WB	<b>WB :</b> HeLa cells, mouse brain tissue, human brain tissue, human liver tissue, rat liver tissue, rat brain tissue
<b>Species Specificity:</b> human, mouse, rat	<b>IP :</b> mouse brain tissue,
<b>Cited Species:</b> human	<b>IHC :</b> mouse brain tissue,
<b>Note-IHC:</b> <i>suggested antigen retrieval with TE buffer pH 9.0; (*) Alternatively, antigen retrieval may be performed with citrate buffer pH 6.0</i>	<b>IF :</b> HeLa cells,

## Background Information

LYPLA1(Lysophospholipase 1) is also named as APT1(Acyl-protein thioesterase 1), LPL1 and belongs to the AB hydrolase 2 family. It is an important enzyme responsible for depalmitoylation of palmitoyl proteins and works as a thioesterase that cleaves the S-palmitoyl group of H-Ras, heterotrimeric G protein alpha subunit (Ga) , regulator of G protein signaling 4 (RGS4) and the endothelial isoform of nitric oxide synthase (eNOS) in vitro(PMID:19439193).

## Notable Publications

Author	Pubmed ID	Journal	Application
Liwei Yang	34624536	Ecotoxicol Environ Saf	WB
Kumiko Koyama	24682756	Drug Metab Dispos	IHC
Megan Garland	29364904	PLoS One	WB

## Storage

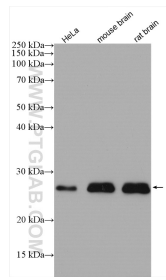
**Storage:**  
Store at -20°C. Stable for one year after shipment.  
**Storage Buffer:**  
PBS with 0.02% sodium azide and 50% glycerol pH 7.3.  
Aliquoting is unnecessary for -20°C storage

\*\*\* 20ul sizes contain 0.1% BSA

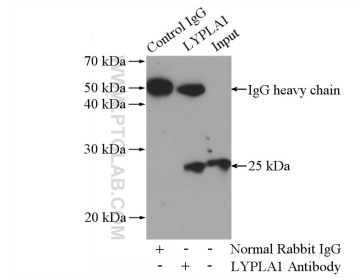
For technical support and original validation data for this product please contact:  
T: 1 (888) 4PTGLAB (1-888-478-4522) (toll free in USA), or 1(312) 455-8498 (outside USA)  
E: proteintech@ptglab.com  
W: ptglab.com

This product is exclusively available under Proteintech Group brand and is not available to purchase from any other manufacturer.

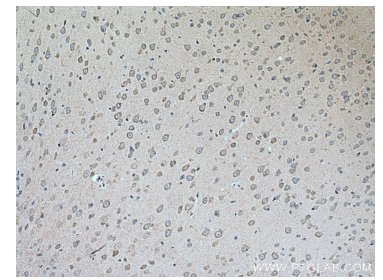
## Selected Validation Data



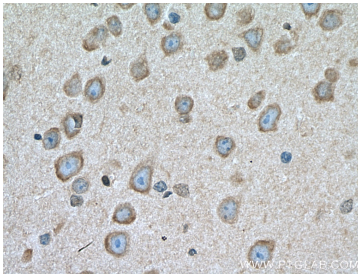
Various lysates were subjected to SDS PAGE followed by western blot with 16055-1-AP (LYPLA1 antibody) at dilution of 1:2500 incubated at room temperature for 1.5 hours.



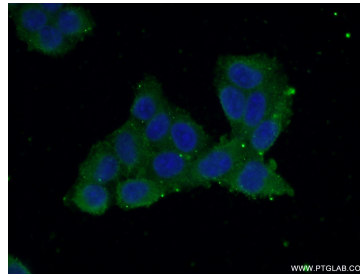
IP Result of anti-LYPLA1 (IP:16055-1-AP, 4 $\mu$ g; Detection:16055-1-AP 1:500) with mouse brain tissue lysate 4000 $\mu$ g.



Immunohistochemical analysis of paraffin-embedded mouse brain tissue slide using 16055-1-AP (LYPLA1 antibody) at dilution of 1:200 (under 10 $\times$  lens). Heat mediated antigen retrieval with Tris-EDTA buffer (pH 9.0).



Immunohistochemical analysis of paraffin-embedded mouse brain tissue slide using 16055-1-AP (LYPLA1 antibody) at dilution of 1:200 (under 40 $\times$  lens). Heat mediated antigen retrieval with Tris-EDTA buffer (pH 9.0).



Immunofluorescent analysis of (-20°C Ethanol) fixed HeLa cells using 16055-1-AP (LYPLA1 antibody) at dilution of 1:50 and Alexa Fluor 488-conjugated AffiniPure Goat Anti-Rabbit IgG(H+L).