

## LENG9 Polyclonal antibody

Catalog Number: 16295-1-AP

1 Publications

## Basic Information

|   |  |   |
|---|--|---|
| <b>Catalog Number:</b><br>16295-1-AP  | <b>GenBank Accession Number:</b><br>BC015921                   | <b>Purification Method:</b><br>Antigen affinity purification                        |
| <b>Size:</b><br>150ul , Concentration: 1000 µg/ml by Nanodrop and 433 µg/ml by Bradford method using BSA as the standard; | <b>GeneID (NCBI):</b><br>94059                                 | <b>Recommended Dilutions:</b><br>WB 1:500-1:2000<br>IHC 1:20-1:200<br>IF 1:10-1:100 |
| <b>Source:</b><br>Rabbit  | <b>Full Name:</b><br>leukocyte receptor cluster (LRC) member 9 |   |
| <b>Isotype:</b><br>IgG  | <b>Calculated MW:</b><br>501 aa, 53 kDa                        |   |
| <b>Immunogen Catalog Number:</b><br>AG9481  | <b>Observed MW:</b><br>54-60 kDa                               |   |

## Applications

|  |   |
|--|---|
| <b>Tested Applications:</b><br>IF, IHC, WB, ELISA  | <b>Positive Controls:</b><br>WB : HeLa cells, Y79 cells   |
| <b>Cited Applications:</b><br>WB   | <b>IHC :</b> human kidney tissue, human brain tissue, human heart tissue, human liver tissue, human lung tissue, human placenta tissue, human skin tissue, human spleen tissue, human testis tissue |
| <b>Species Specificity:</b><br>human   | <b>IF :</b> HeLa cells, MCF-7 cells   |
| <b>Cited Species:</b><br>human   |   |
| <b>Note-IHC: suggested antigen retrieval with TE buffer pH 9.0; (*) Alternatively, antigen retrieval may be performed with citrate buffer pH 6.0</b> |   |

## Background Information

## Notable Publications

| Author      | Pubmed ID | Journal    | Application |
|-------------|-----------|------------|-------------|
| Liyuan Zhou | 35538075  | Nat Commun | WB          |

## Storage

**Storage:**  
Store at -20°C. Stable for one year after shipment.

**Storage Buffer:**  
PBS with 0.02% sodium azide and 50% glycerol pH 7.3.

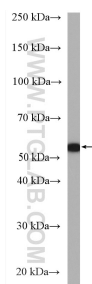
Aliquoting is unnecessary for -20°C storage

\*\*\* 20ul sizes contain 0.1% BSA

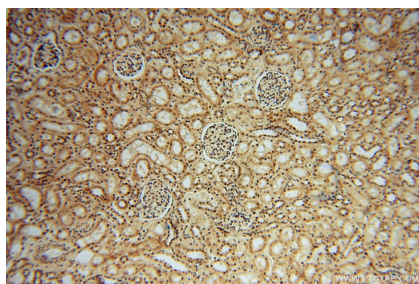
For technical support and original validation data for this product please contact:  
 T: 1 (888) 4PTGLAB (1-888-478-4522) (toll free in USA), or 1(312) 455-8498 (outside USA)  
 E: [proteintech@ptglab.com](mailto:proteintech@ptglab.com)  
 W: [ptglab.com](http://ptglab.com)

This product is exclusively available under Proteintech Group brand and is not available to purchase from any other manufacturer.

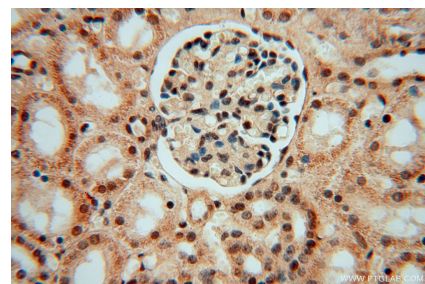
## Selected Validation Data



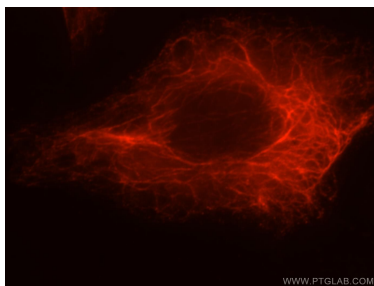
HeLa cells were subjected to SDS PAGE followed by western blot with 16295-1-AP (LENG9 antibody) at dilution of 1:1000 incubated at room temperature for 1.5 hours.



Immunohistochemical analysis of paraffin-embedded human kidney using 16295-1-AP (LENG9 antibody) at dilution of 1:50 (under 10x lens).



Immunohistochemical analysis of paraffin-embedded human kidney using 16295-1-AP (LENG9 antibody) at dilution of 1:50 (under 40x lens).



Immunofluorescent analysis of HeLa cells, using LENG9 antibody 16295-1-AP at 1:25 dilution and Rhodamine-labeled goat anti-rabbit IgG (red).