

For Research Use Only

PISD Polyclonal antibody

Catalog Number: 16401-1-AP

Featured Product

4 Publications



Basic Information

Catalog Number: 16401-1-AP	GenBank Accession Number: BC001482	Purification Method: Antigen affinity purification
Size: 150ul , Concentration: 450 µg/ml by Nanodrop;	GeneID (NCBI): 23761	Recommended Dilutions: WB 1:500-1:2400 IP 0.5-4.0 ug for 1.0-3.0 mg of total protein lysate IHC 1:20-1:200
Source: Rabbit	Full Name: phosphatidylserine decarboxylase	
Isotype: IgG	Calculated MW: 375aa,43 kDa; 408aa,46 kDa	
Immunogen Catalog Number: AG9499	Observed MW: 50~55 kDa	

Applications

Tested Applications:
IHC, IP, WB, ELISA

Cited Applications:
WB

Species Specificity:
human, mouse, rat

Cited Species:
human

Note-IHC: suggested antigen retrieval with TE buffer pH 9.0; (*) Alternatively, antigen retrieval may be performed with citrate buffer pH 6.0

Positive Controls:

WB : K-562 cells, COLO 320 cells, HeLa cells, HepG2 cells, human kidney tissue, human spleen tissue, L02 cells, NIH/3T3 cells

IP : L02 cells,

IHC : human kidney tissue,

Background Information

PISD (Phosphatidylserine decarboxylase proenzyme) belongs to the phosphatidylserine decarboxylase family. It contains a conserved LGST motif that functions as an autocatalytic cleavage site where the proenzyme is split into mature alpha and beta subunits. It has 2 isoforms produced by alternative splicing. This antibody is specific to PISD. The sequence corresponds to the beta isoform.

Notable Publications

Author	Pubmed ID	Journal	Application
Ayesh K Seneviratne	30930145	Cell Stem Cell	WB
Yawen Ma	33675985	Cancer Lett	WB
Yaoyao Song	36589750	Front Cell Dev Biol	

Storage

Storage:

Store at -20°C. Stable for one year after shipment.

Storage Buffer:

PBS with 0.02% sodium azide and 50% glycerol pH 7.3.

Aliquoting is unnecessary for -20°C storage

*** 20ul sizes contain 0.1% BSA

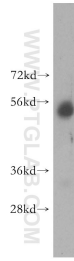
For technical support and original validation data for this product please contact:

T: 1 (888) 4PTGLAB (1-888-478-4522) (toll free in USA), or 1(312) 455-8498 (outside USA)

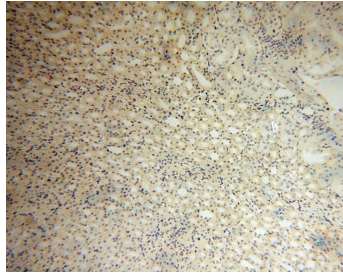
E: proteintech@ptglab.com
W: ptglab.com

This product is exclusively available under Proteintech Group brand and is not available to purchase from any other manufacturer.

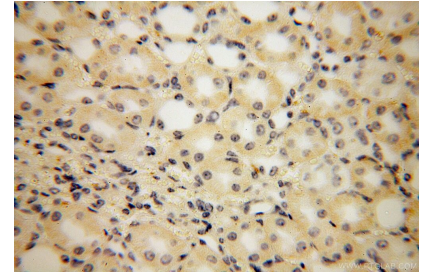
Selected Validation Data



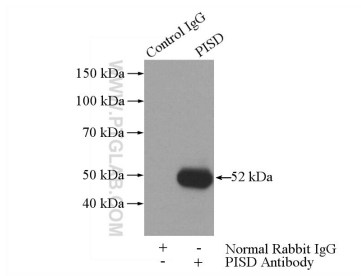
K-562 cells were subjected to SDS PAGE followed by western blot with 16401-1-AP (PISD antibody) at dilution of 1:300 incubated at room temperature for 1.5 hours.



Immunohistochemical analysis of paraffin-embedded human kidney using 16401-1-AP (PISD antibody) at dilution of 1:100 (under 10x lens).



Immunohistochemical analysis of paraffin-embedded human kidney using 16401-1-AP (PISD antibody) at dilution of 1:100 (under 40x lens).



IP Result of anti-PISD (IP:16401-1-AP, 3 μ g; Detection:16401-1-AP 1:500) with LO2 cells lysate 1400 μ g.