

IgG heavy chain Polyclonal antibody

Catalog Number: 16402-1-AP

12 Publications

Basic Information

Catalog Number:

16402-1-AP

Size:

150ul, Concentration: 600 µg/ml by Nanodrop and 367 µg/ml by Bradford method using BSA as the standard;

Source:

Rabbit

Isotype:

IgG

Immunogen Catalog Number:

AG9519

GenBank Accession Number:

BC025985

GeneID (NCBI):

3503

UNIPROT ID:

P01861

Full Name:

immunoglobulin heavy constant gamma 4 (G4m marker)

Calculated MW:

473 aa, 52 kDa

Observed MW:

55 kDa

Purification Method:

Antigen affinity purification

Recommended Dilutions:

WB 1:5000-1:20000

IHC 1:50-1:500

Applications

Tested Applications:

IHC, WB, ELISA

Cited Applications:

CoIP, IHC, IP, RIP, WB

Species Specificity:

human

Cited Species:

human, mouse

Note-IHC: suggested antigen retrieval with TE buffer pH 9.0; (*) Alternatively, antigen retrieval may be performed with citrate buffer pH 6.0

Positive Controls:

WB : human plasma tissue, Jurkat cells

IHC : human tonsillitis tissue,

Background Information

IGHG4 has some fragments with MW 36 kDa (<http://www.uniprot.org/uniprot/P01861>) and 52 kDa (<http://www.ncbi.nlm.nih.gov/protein/CAE45900>). This antibody detects all the Heavy chain of human immunoglobulin gamma (IgG), IgG1, IgG2, IgG3, IgG4 included.

Notable Publications

Author	Pubmed ID	Journal	Application
Rong Ding	34553339	J Physiol Biochem	IP
Shawna A. Cooper	36267963	Front Oncol	IP
Dong-Lin Ren	31897137	Oncol Lett	WB

Storage

Storage:

Store at -20°C. Stable for one year after shipment.

Storage Buffer:

PBS with 0.02% sodium azide and 50% glycerol pH 7.3.

Aliquoting is unnecessary for -20°C storage

*** 20ul sizes contain 0.1% BSA

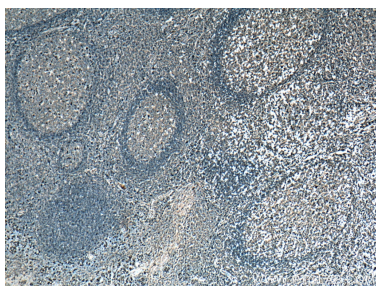
For technical support and original validation data for this product please contact:

T: 1 (888) 4PTGLAB (1-888-478-4522) (toll free in USA), or 1(312) 455-8498 (outside USA)

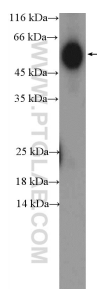
E: proteintech@ptglab.com
W: ptglab.com

This product is exclusively available under Proteintech Group brand and is not available to purchase from any other manufacturer.

Selected Validation Data



Immunohistochemical analysis of paraffin-embedded human tonsillitis tissue slide using 16402-1-AP (human IgG heavy chain antibody) at dilution of 1:200 (under 4x lens). Heat mediated antigen retrieval with Tris-EDTA buffer (pH 9.0).



human plasma (0.3ug) were subjected to SDS PAGE followed by western blot with 16402-1-AP (human IgG heavy chain Antibody) at dilution of 1:1000 incubated at room temperature for 1.5 hours.