

For Research Use Only

LETM2 Polyclonal antibody

Catalog Number: 17180-1-AP

Featured Product

3 Publications



Basic Information

Catalog Number: 17180-1-AP	GenBank Accession Number: BC029541	Purification Method: Antigen affinity purification
Size: 150ul, Concentration: 187 µg/ml by Nanodrop and 187 µg/ml by Bradford method using BSA as the standard;	GeneID (NCBI): 137994	Recommended Dilutions: IHC 1:20-1:200
Source: Rabbit	Full Name: leucine zipper-EF-hand containing transmembrane protein 2	
Isotype: IgG	Calculated MW: 277 aa, 31 kDa	
Immunogen Catalog Number: AG10900		

Applications

Tested Applications: IHC, ELISA	Positive Controls: IHC : human placenta tissue, human small intestine tissue
Cited Applications: IHC, WB	
Species Specificity: human	
Cited Species: human	

Note-IHC: suggested antigen retrieval with TE buffer pH 9.0; (*) Alternatively, antigen retrieval may be performed with citrate buffer pH 6.0

Background Information

Notable Publications

Author	Pubmed ID	Journal	Application
Shurui Zhou	36230646	Cancers (Basel)	WB,IHC
Yuhong Zhang	34628513	J Mol Med (Berl)	WB
Caixia Cheng	26833333	Am J Hum Genet	WB,IHC

Storage

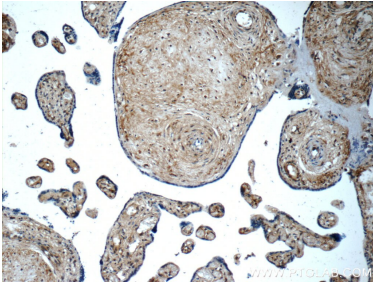
Storage:
Store at -20°C. Stable for one year after shipment.
Storage Buffer:
PBS with 0.02% sodium azide and 50% glycerol pH 7.3.
Aliquoting is unnecessary for -20°C storage

*** 20ul sizes contain 0.1% BSA

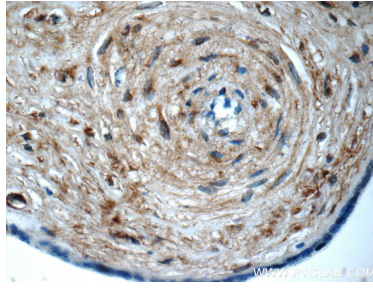
For technical support and original validation data for this product please contact:
T: 1 (888) 4PTGLAB (1-888-478-4522) (toll free in USA), or 1(312) 455-8498 (outside USA)
E: proteintech@ptglab.com
W: ptglab.com

This product is exclusively available under Proteintech Group brand and is not available to purchase from any other manufacturer.

Selected Validation Data



Immunohistochemical analysis of paraffin-embedded human placenta tissue slide using 17180-1-AP (LETM2 Antibody) at dilution of 1:50 (under 10x lens).



Immunohistochemical analysis of paraffin-embedded human placenta tissue slide using 17180-1-AP (LETM2 Antibody) at dilution of 1:50 (under 40x lens).