

For Research Use Only

# CTDSPL2 Polyclonal antibody

Catalog Number: 17532-1-AP **2 Publications**



## Basic Information

<b>Catalog Number:</b> 17532-1-AP	<b>GenBank Accession Number:</b> BC035744	<b>Purification Method:</b> Antigen affinity purification
<b>Size:</b> 150ul , Concentration: 300 µg/ml by Nanodrop and 167 µg/ml by Bradford method using BSA as the standard;	<b>GeneID (NCBI):</b> 51496	<b>Recommended Dilutions:</b> WB 1:500-1:2400 IP 0.5-4.0 ug for IP and 1:500-1:1000 for WB
<b>Source:</b> Rabbit	<b>Full Name:</b> CTD (carboxy-terminal domain, RNA polymerase II, polypeptide A) small phosphatase like 2	<b>IHC 1:20-1:200</b> <b>IF 1:50-1:500</b>
<b>Isotype:</b> IgG	<b>Calculated MW:</b> 466 aa, 53 kDa	
<b>Immunogen Catalog Number:</b> AG11581	<b>Observed MW:</b> 67 kDa	

## Applications

### Tested Applications:

IF, IHC, IP, WB, ELISA

### Cited Applications:

WB

### Species Specificity:

human, mouse, rat

### Cited Species:

human

### Positive Controls:

**WB:** MCF7 cells, HeLa cells, HepG2 cells, human brain tissue, mouse eye tissue, mouse testis tissue, Y79 cells

**IP:** mouse testis tissue,

**IHC:** human endometrial cancer tissue, human testis tissue

**IF:** HeLa cells,

**Note-IHC: suggested antigen retrieval with TE buffer pH 9.0; (\*) Alternatively, antigen retrieval may be performed with citrate buffer pH 6.0**

## Background Information

CTD small phosphatase-like protein 2 (CTDSPL2) is also named as HSPC058 and HSPC129, belongs to the CTDSPL2 family. It is a putative RNA-polymerase II carboxy-terminal domain (CTD) phosphatase, whose specific CTD phosphatase activity was verified in vitro, and may regulate the dynamic phosphorylation of RNAP II CTD. (PMID: 17487459) It can obviously improve the expression of  $\epsilon$ - and  $\gamma$ -globin genes in K562 cells and CD34+ cells derived from UCB. (PMID: 20932329) This antibody is a rabbit polyclonal antibody raised against a region of human CTDSPL2.

## Notable Publications

Author	Pubmed ID	Journal	Application
Ma Yan-Ni YN	20932329	BMC Cell Biol	WB
Jie Du	31907356	Cell Death Dis	WB

## Storage

### Storage:

Store at -20°C. Stable for one year after shipment.

### Storage Buffer:

PBS with 0.02% sodium azide and 50% glycerol pH 7.3.

Aliquoting is unnecessary for -20°C storage

\*\*\* 20ul sizes contain 0.1% BSA

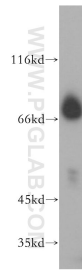
For technical support and original validation data for this product please contact:

T: 1 (888) 4PTGLAB (1-888-478-4522) (toll free in USA), or 1(312) 455-8498 (outside USA)

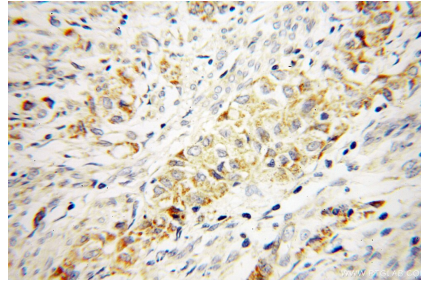
E: proteintech@ptglab.com  
W: ptglab.com

This product is exclusively available under Proteintech Group brand and is not available to purchase from any other manufacturer.

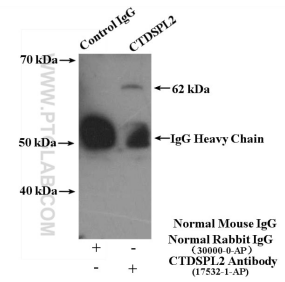
## Selected Validation Data



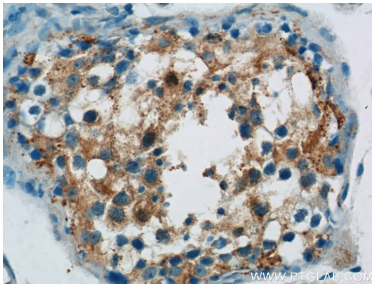
MCF7 cells were subjected to SDS PAGE followed by western blot with 17532-1-AP (CTDSPL2 antibody) at dilution of 1:500 incubated at room temperature for 1.5 hours.



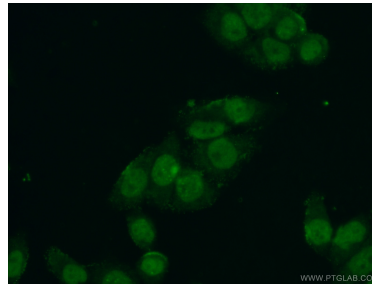
Immunohistochemical analysis of paraffin-embedded human endometrial cancer using 17532-1-AP (CTDSPL2 antibody) at dilution of 1:100 (under 40x lens).



IP Result of anti-CTDSPL2 (IP:17532-1-AP, 4ug; Detection:17532-1-AP 1:500) with mouse testis tissue lysate 4400ug.



Immunohistochemical analysis of paraffin-embedded human testis tissue slide using 17532-1-AP (CTDSPL2 Antibody) at dilution of 1:50 (under 40x lens).



Immunofluorescent analysis of (4% PFA) fixed HeLa cells using 17532-1-AP (CTDSPL2 antibody) at dilution of 1:50 and Alexa Fluor 488-conjugated AffiniPure Goat Anti-Rabbit IgG(H+L).