

For Research Use Only

ENPEP Polyclonal antibody

Catalog Number: 17655-1-AP **2 Publications**



Basic Information

Catalog Number: 17655-1-AP	GenBank Accession Number: BC094770	Purification Method: Antigen affinity purification
Size: 150ul , Concentration: 207 µg/ml by Nanodrop and 207 µg/ml by Bradford method using BSA as the standard;	GeneID (NCBI): 2028	Recommended Dilutions: IF 1:10-1:100
Source: Rabbit	Full Name: glutamyl aminopeptidase (aminopeptidase A)	
Isotype: IgG	Calculated MW: 957 aa, 109 kDa	
Immunogen Catalog Number: AG11903		

Applications

Tested Applications: FC, IF, ELISA	Positive Controls: IF : HepG2 cells,
Cited Applications: FC, IF	
Species Specificity: human	
Cited Species: mouse	

Background Information

Notable Publications

Author	Pubmed ID	Journal	Application
Taha A Jan	34260939	Cell Rep	IF
Tae Jin Lee	19743427	Small	FC

Storage

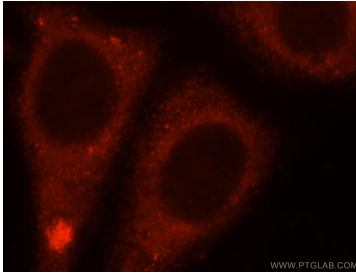
Storage:
Store at -20°C. Stable for one year after shipment.
Storage Buffer:
PBS with 0.02% sodium azide and 50% glycerol pH 7.3.
Aliquoting is unnecessary for -20°C storage

*** 20ul sizes contain 0.1% BSA

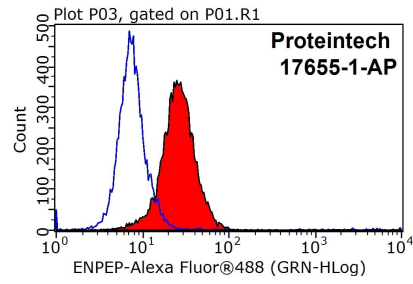
For technical support and original validation data for this product please contact:
T: 1 (888) 4PTGLAB (1-888-478-4522) (toll free in USA), or 1(312) 455-8498 (outside USA)
E: proteintech@ptglab.com
W: ptglab.com

This product is exclusively available under Proteintech Group brand and is not available to purchase from any other manufacturer.

Selected Validation Data



Immunofluorescent analysis of HepG2 cells, using ENPEP antibody 17655-1-AP at 1:25 dilution and Rhodamine-labeled goat anti-rabbit IgG (red).



1X10⁶ HepG2 cells were stained with 0.2ug ENPEP antibody (17655-1-AP, red) and control antibody (blue). Fixed with 90% MeOH blocked with 3% BSA (30 min). Alexa Fluor 488-conjugated AffiniPure Goat Anti-Rabbit IgG(H+L) with dilution 1:1000.