

For Research Use Only

TYW1B Polyclonal antibody

Catalog Number: 17665-1-AP



Basic Information

Catalog Number: 17665-1-AP	GenBank Accession Number: BC068520	Purification Method: Antigen affinity purification
Size: 150ul , Concentration: 300 µg/ml by Nanodrop and 200 µg/ml by Bradford method using BSA as the standard;	GeneID (NCBI): 441250	Recommended Dilutions: WB 1:500-1:1000 IHC 1:20-1:200
Source: Rabbit	Full Name: tRNA-yW synthesizing protein 1 homolog B (non-protein coding)	
Isotype: IgG	Calculated MW: 668 aa, 77 kDa	
Immunogen Catalog Number: AG11947	Observed MW: 77 kDa	

Applications

Tested Applications:

IHC, WB, ELISA

Species Specificity:

mouse, human

Note-IHC: suggested antigen retrieval with TE buffer pH 9.0; (*) Alternatively, antigen retrieval may be performed with citrate buffer pH 6.0

Positive Controls:

WB : mouse liver tissue, MCF-7 cells

IHC : human ovary tissue, human lung tissue

Background Information

Storage

Storage:

Store at -20°C. Stable for one year after shipment.

Storage Buffer:

PBS with 0.02% sodium azide and 50% glycerol pH 7.3.

Aliquoting is unnecessary for -20°C storage

*** 20ul sizes contain 0.1% BSA

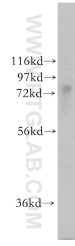
For technical support and original validation data for this product please contact:

T: 1 (888) 4PTGLAB (1-888-478-4522) (toll free in USA), or 1(312) 455-8498 (outside USA)

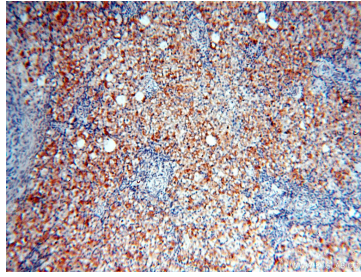
E: proteintech@ptglab.com
W: ptglab.com

This product is exclusively available under Proteintech Group brand and is not available to purchase from any other manufacturer.

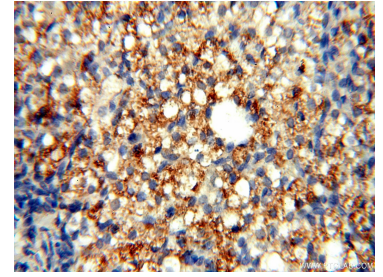
Selected Validation Data



mouse liver tissue were subjected to SDS PAGE followed by western blot with 17665-1-AP (TYW1B antibody) at dilution of 1:500 incubated at room temperature for 1.5 hours.



Immunohistochemical analysis of paraffin-embedded human ovary using 17665-1-AP (TYW1B antibody) at dilution of 1:50 (under 10x lens).



Immunohistochemical analysis of paraffin-embedded human ovary using 17665-1-AP (TYW1B antibody) at dilution of 1:50 (under 40x lens).