

For Research Use Only

NFE2L3 Polyclonal antibody

Catalog Number: 17745-1-AP **2 Publications**



Basic Information

Catalog Number: 17745-1-AP	GenBank Accession Number: BC068455	Purification Method: Antigen affinity purification
Size: 150ul , Concentration: 850 µg/ml by Nanodrop and 453 µg/ml by Bradford method using BSA as the standard;	GeneID (NCBI): 9603	Recommended Dilutions: WB 1:500-1:1000 IF 1:50-1:500
Source: Rabbit	Full Name: nuclear factor (erythroid-derived 2)-like 3	
Isotype: IgG	Calculated MW: 694 aa, 76 kDa	
Immunogen Catalog Number: AG12005	Observed MW: 76 kDa	

Applications

Tested Applications: IF, WB, ELISA	Positive Controls: WB : human placenta tissue, IF : HepG2 cells,
Cited Applications: WB	
Species Specificity: human	
Cited Species: human	

Background Information

Notable Publications

Author	Pubmed ID	Journal	Application
Guohong Huang	34966429	J Oncol	WB
Tingting Chen	36108571	Comput Methods Programs Biomed	WB

Storage

Storage:
Store at -20°C. Stable for one year after shipment.
Storage Buffer:
PBS with 0.02% sodium azide and 50% glycerol pH 7.3.
Aliquoting is unnecessary for -20°C storage

*** 20ul sizes contain 0.1% BSA

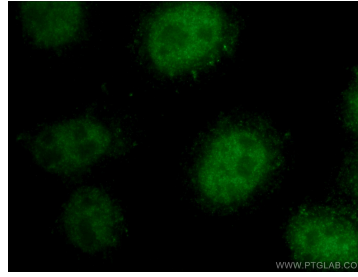
For technical support and original validation data for this product please contact:
T: 1 (888) 4PTGLAB (1-888-478-4522) (toll free in USA), or 1(312) 455-8498 (outside USA)
E: proteintech@ptglab.com
W: ptglab.com

This product is exclusively available under Proteintech Group brand and is not available to purchase from any other manufacturer.

Selected Validation Data



human placenta tissue were subjected to SDS PAGE followed by western blot with 17745-1-AP (NFE2L3 antibody) at dilution of 1:500 incubated at room temperature for 1.5 hours.



Immunofluorescent analysis of (4% PFA) fixed HepG2 cells using 17745-1-AP (NFE2L3 antibody) at dilution of 1:50 and Alexa Fluor 488-conjugated AffiniPure Goat Anti-Rabbit IgG(H+L).