

For Research Use Only

# RGN/SMP30 Polyclonal antibody

Catalog Number: 17947-1-AP **10 Publications**



## Basic Information

<b>Catalog Number:</b> 17947-1-AP	<b>GenBank Accession Number:</b> BC073173	<b>Purification Method:</b> Antigen affinity purification
<b>Size:</b> 150ul , Concentration: 400 µg/ml by Nanodrop and 267 µg/ml by Bradford method using BSA as the standard;	<b>GeneID (NCBI):</b> 9104	<b>Recommended Dilutions:</b> WB 1:3000-1:10000 IP 0.5-4.0 ug for 1.0-3.0 mg of total protein lysate IHC 1:50-1:500
<b>Source:</b> Rabbit	<b>Full Name:</b> regucalcin (senescence marker protein-30)	
<b>Isotype:</b> IgG	<b>Calculated MW:</b> 299 aa, 33 kDa	
<b>Immunogen Catalog Number:</b> AG12423	<b>Observed MW:</b> 33 kDa, 25 kDa	

## Applications

<b>Tested Applications:</b> IHC, IP, WB, ELISA	<b>Positive Controls:</b>
<b>Cited Applications:</b> IF, IHC, WB	<b>WB :</b> mouse liver tissue, mouse small intestine tissue, rat liver tissue
<b>Species Specificity:</b> human, mouse, rat	<b>IP :</b> mouse liver tissue,
<b>Cited Species:</b> human, mouse, bovine	<b>IHC :</b> rat kidney tissue, human liver tissue, human kidney tissue, human hepatocirrhosis tissue
<b>Note-IHC: suggested antigen retrieval with TE buffer pH 9.0; (*) Alternatively, antigen retrieval may be performed with citrate buffer pH 6.0</b>	

## Background Information

Regucalcin (RGN), also known as SMP30, is a highly conserved, calcium-binding protein, that is preferentially expressed in the liver and kidney. SMP30 is preferentially localized in hepatocytes and renal proximal tubular epithelial cells. It is known to be related to aging, hepatocyte proliferation and tumorigenesis. It may be useful for HCC serologic screening, especially for the patients with AFP Negative. RGN encodes two isoforms: 33 kDa and 25 kDa.

## Notable Publications

Author	Pubmed ID	Journal	Application
Le Zhang	34688152	Int Immunopharmacol	WB
Norihiro Okada	34082065	Gene	WB
Xiaolong Li	31289533	Oncol Lett	WB

## Storage

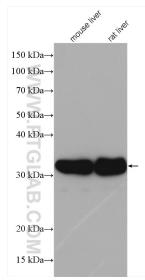
**Storage:**  
Store at -20°C. Stable for one year after shipment.  
**Storage Buffer:**  
PBS with 0.02% sodium azide and 50% glycerol pH 7.3.  
Aliquoting is unnecessary for -20°C storage

\*\*\* 20ul sizes contain 0.1% BSA

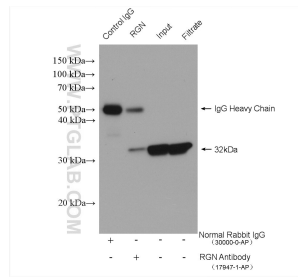
For technical support and original validation data for this product please contact:  
T: 1 (888) 4PTGLAB (1-888-478-4522) (toll free in USA), or 1(312) 455-8498 (outside USA)  
E: proteintech@ptglab.com  
W: ptglab.com

This product is exclusively available under Proteintech Group brand and is not available to purchase from any other manufacturer.

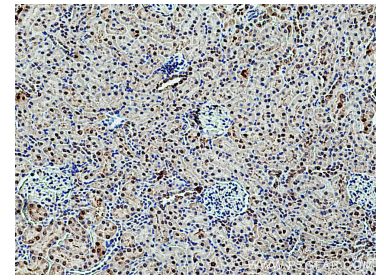
## Selected Validation Data



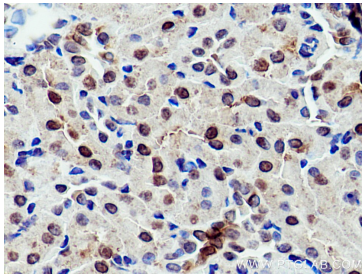
Various lysates were subjected to SDS PAGE followed by western blot with 17947-1-AP (RGN/SMP30 antibody) at dilution of 1:8000 incubated at room temperature for 1.5 hours.



IP result of anti-RGN/SMP30 (IP:17947-1-AP, 4ug; Detection:17947-1-AP 1:15000) with mouse liver tissue lysate 3040 ug.



Immunohistochemical analysis of paraffin-embedded rat kidney tissue slide using 17947-1-AP (RGN/SMP30 antibody) at dilution of 1:200 (under 10x lens). Heat mediated antigen retrieval with Tris-EDTA buffer (pH 9.0).



Immunohistochemical analysis of paraffin-embedded rat kidney tissue slide using 17947-1-AP (RGN/SMP30 antibody) at dilution of 1:200 (under 40x lens). Heat mediated antigen retrieval with Tris-EDTA buffer (pH 9.0).