

For Research Use Only

# ABCD1 Polyclonal antibody

Catalog Number: 18138-1-AP

Featured Product

2 Publications



## Basic Information

<b>Catalog Number:</b> 18138-1-AP	<b>GenBank Accession Number:</b> BC025358	<b>Purification Method:</b> Antigen affinity purification
<b>Size:</b> 150ul , Concentration: 600 µg/ml by Nanodrop;	<b>GeneID (NCBI):</b> 215	<b>Recommended Dilutions:</b> WB 1:500-1:3000 IP 0.5-4.0 ug for IP and 1:500-1:1000 for WB
<b>Source:</b> Rabbit	<b>Full Name:</b> ATP-binding cassette, sub-family D (ALD), member 1	
<b>Isotype:</b> IgG	<b>Calculated MW:</b> 745 aa, 83 kDa	
<b>Immunogen Catalog Number:</b> AG12757	<b>Observed MW:</b> 75 kDa	

## Applications

<b>Tested Applications:</b> FC, IP, WB, ELISA	<b>Positive Controls:</b> WB : HepG2 cells, HeLa cells IP : HeLa cells,
<b>Cited Applications:</b> WB	
<b>Species Specificity:</b> human	
<b>Cited Species:</b> human	

## Background Information

ABCD1 (also known as ALDP) is a member of the ATP-binding cassette (ABC) transporter superfamily which functions as transporter for a wide variety of substrates. It localizes to the peroxisomal membrane. The exact function is not clear so far. Various mutations of ABCD1 cause X-linked adrenoleukodystrophy (X-ALD), an inherited neurodegenerative disease affecting the nervous system white matter and adrenal cortex.

## Notable Publications

Author	Pubmed ID	Journal	Application
Tatsuo Miyamoto	32368833	EMBO J	WB
Chao Xiong	36810450	Signal Transduct Target Ther	WB

## Storage

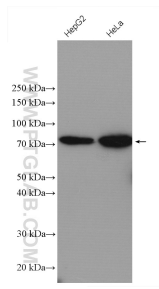
**Storage:**  
Store at -20°C. Stable for one year after shipment.  
**Storage Buffer:**  
PBS with 0.02% sodium azide and 50% glycerol pH 7.3.  
Aliquoting is unnecessary for -20°C storage

\*\*\* 20ul sizes contain 0.1% BSA

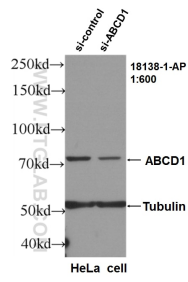
For technical support and original validation data for this product please contact:  
T: 1 (888) 4PTGLAB (1-888-478-4522) (toll free in USA), or 1(312) 455-8498 (outside USA)  
E: proteintech@ptglab.com  
W: ptglab.com

This product is exclusively available under Proteintech Group brand and is not available to purchase from any other manufacturer.

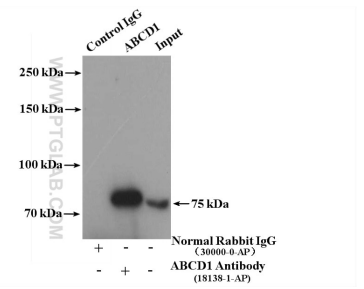
## Selected Validation Data



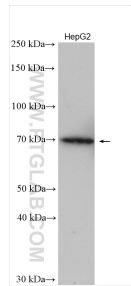
Various lysates were subjected to SDS PAGE followed by western blot with 18138-1-AP (ABCD1 antibody) at dilution of 1:600 incubated at room temperature for 1.5 hours.



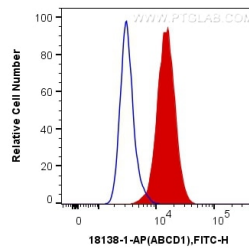
WB result of ABCD1 antibody (18138-1-AP, 1:600) with si-Control and si-ABCD1 transfected HeLa cells..



IP result of anti-ABCD1 (IP:18138-1-AP, 4ug; Detection:18138-1-AP 1:700) with HeLa cells lysate 3000 ug.



HepG2 cells were subjected to SDS PAGE followed by western blot with 18138-1-AP (ABCD1 antibody) at dilution of 1:1500 incubated at room temperature for 1.5 hours.



1X10<sup>6</sup> HeLa cells were intracellularly stained with 0.4 ug Anti-Human ABCD1 (18138-1-AP) and CoraLite®488-Conjugated AffiniPure Goat Anti-Rabbit IgG(H+L) at dilution 1:1000 (red), or 0.4 ug Control Antibody. Cells were fixed with 4% PFA and permeabilized with Flow Cytometry Perm Buffer (PF00011-C).