

## RBM24 Polyclonal antibody

Catalog Number: 18178-1-AP

Featured Product

9 Publications

## Basic Information

|   |   |   |
|---|---|---|
| <b>Catalog Number:</b><br>18178-1-AP                          | <b>GenBank Accession Number:</b><br>BC104808      | <b>Purification Method:</b><br>Antigen affinity purification                        |
| <b>Size:</b><br>150ul , Concentration: 700 µg/ml by Nanodrop; | <b>GeneID (NCBI):</b><br>221662                   | <b>Recommended Dilutions:</b><br>WB 1:500-1:1000<br>IHC 1:20-1:200<br>IF 1:50-1:500 |
| <b>Source:</b><br>Rabbit                                      | <b>UNIPROT ID:</b><br>Q9BX46                      |   |
| <b>Isotype:</b><br>IgG  | <b>Full Name:</b><br>RNA binding motif protein 24 |   |
| <b>Immunogen Catalog Number:</b><br>AG12871                   | <b>Calculated MW:</b><br>191 aa, 20 kDa           |   |
|   | <b>Observed MW:</b><br>20-27 kDa                  |   |

## Applications

|   |   |
|---|---|
| <b>Tested Applications:</b><br>WB, IF, IHC, ELISA | <b>Positive Controls:</b><br>WB : mouse heart tissue, HeLa cells<br>IHC : human skeletal muscle tissue,<br>IF : mouse skeletal muscle tissue, |
| <b>Cited Applications:</b><br>WB, IF, RIP, IHC    |   |
| <b>Species Specificity:</b><br>human, mouse, rat  |   |
| <b>Cited Species:</b><br>human, chicken, mouse    |   |

**Note-IHC: suggested antigen retrieval with TE buffer pH 9.0; (\*) Alternatively, antigen retrieval may be performed with citrate buffer pH 6.0**

## Background Information

RNA-binding proteins have a pivotal role in post-transcriptionally regulating gene expression. During early development they exhibit temporally and spatially regulated expression pattern, and affect the proteome of a single cell by controlling alternative splicing, transport, localization, and stability of their target RNAs [PMID:22510371]. Their expression are tissue-specific, and their crucial influence on the protein set-up especially in muscle cells has become recognized recently [PMID:21982546]. RBM24 is one RNA-binding protein and plays a fundamental role in regulating cardiac gene expression, sarcomeric assembly, and cardiac contractility and may thus represent a novel pathway to cardiomyopathy [PMID:20338237].

## Notable Publications

| Author            | Pubmed ID | Journal          | Application |
|-------------------|-----------|------------------|-------------|
| Raphaëlle Grifone | 25217815  | Mech Dev         | IF          |
| Suhong Sun        | 34477109  | Elife            | IF          |
| Shulei Gong       | 36352154  | J Mol Med (Berl) | IHC,RIP     |

## Storage

**Storage:**  
Store at -20°C. Stable for one year after shipment.  
**Storage Buffer:**  
PBS with 0.02% sodium azide and 50% glycerol pH 7.3.  
Aliquoting is unnecessary for -20°C storage

\*\*\* 20ul sizes contain 0.1% BSA

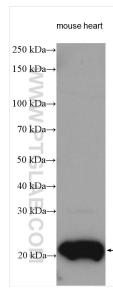
For technical support and original validation data for this product please contact:

T: 1 (888) 4PTGLAB (1-888-478-4522) (toll free in USA), or 1(312) 455-8498 (outside USA)

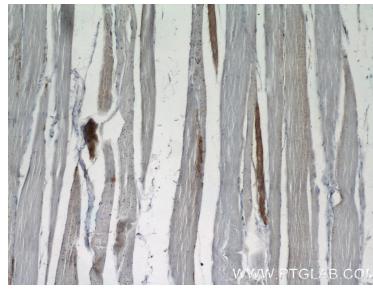
E: [proteintech@ptglab.com](mailto:proteintech@ptglab.com)  
W: [ptglab.com](http://ptglab.com)

This product is exclusively available under Proteintech Group brand and is not available to purchase from any other manufacturer.

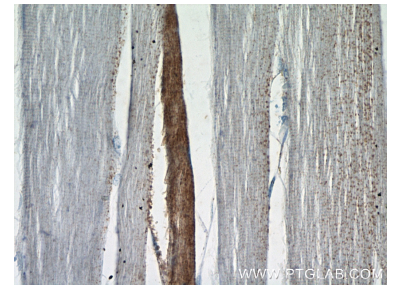
## Selected Validation Data



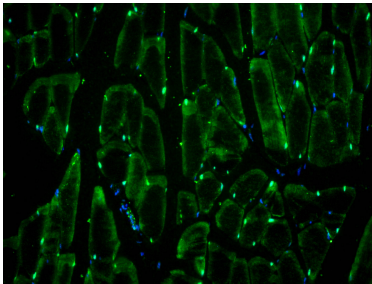
mouse heart tissue lysates were subjected to SDS PAGE followed by western blot with 18178-1-AP (RBM24 antibody) at dilution of 1:800 incubated at room temperature for 1.5 hours.



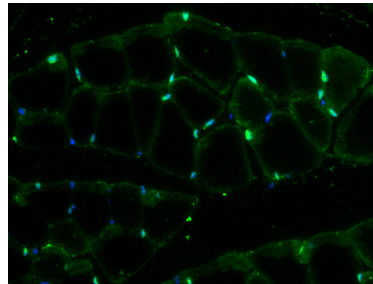
Immunohistochemical analysis of paraffin-embedded human skeletal muscle tissue slide using 18178-1-AP (RBM24 Antibody) at dilution of 1:50 (under 10x lens).



Immunohistochemical analysis of paraffin-embedded human skeletal muscle tissue slide using 18178-1-AP (RBM24 Antibody) at dilution of 1:50 (under 40x lens).



Immunofluorescent analysis of (4% PFA) fixed mouse skeletal muscle tissue using RBM24 antibody (18178-1-AP) at dilution of 1:200 and CoraLite®488-Conjugated AffiniPure Goat Anti-Rabbit IgG(H+L).



Immunofluorescent analysis of (4% PFA) fixed mouse skeletal muscle tissue using RBM24 antibody (18178-1-AP) at dilution of 1:200 and CoraLite®488-Conjugated AffiniPure Goat Anti-Rabbit IgG(H+L).