

For Research Use Only

LSR Polyclonal antibody

Catalog Number: 18216-1-AP **2 Publications**



Basic Information

Catalog Number: 18216-1-AP	GenBank Accession Number: BC004381	Purification Method: Antigen affinity purification
Size: 150ul, Concentration: 500 µg/ml by Nanodrop and 300 µg/ml by Bradford method using BSA as the standard;	GeneID (NCBI): 51599	Recommended Dilutions: WB 1:500-1:2000 IHC 1:500-1:2000
Source: Rabbit	Full Name: lipolysis stimulated lipoprotein receptor	
Isotype: IgG	Calculated MW: 71 kDa	
Immunogen Catalog Number: AG12961	Observed MW: 60-70 kDa, 56 kDa	

Applications

Tested Applications:
FC, IHC, WB, ELISA

Cited Applications:
WB

Species Specificity:
human, rat, mouse

Cited Species:
mouse

Note-IHC: suggested antigen retrieval with TE buffer pH 9.0; (*) Alternatively, antigen retrieval may be performed with citrate buffer pH 6.0

Positive Controls:

WB: HT-29 cells, HepG2 cells, mouse liver tissue, rat liver tissue

IHC: mouse stomach tissue, mouse liver tissue

Background Information

LSR (lipolysis stimulated lipoprotein receptor) is a lipoprotein receptor primarily expressed in the liver and activated by free fatty acids (PMID: 10224102). This remnant receptor binds both apoB- and apoE-containing lipoproteins and displays greatest affinity for TG-rich lipoproteins. Distribution of LSR causes embryonic lethality in mice, indicating that the expression of LSR is critical for liver and embryonic development (PMID: 15265030). Investigations show that LSR is a multimer consisting of α subunit (68 kDa) and β subunit (56 kDa) associated through disulfide bridges (PMID: 10224102; 19188430; 18644789).

Notable Publications

Author	Pubmed ID	Journal	Application
Yanjie Chen	31706176	Biosens Bioelectron	
Zijun Peng	34741939	J Hazard Mater	WB

Storage

Storage:

Store at -20°C. Stable for one year after shipment.

Storage Buffer:

PBS with 0.02% sodium azide and 50% glycerol pH 7.3.

Aliquoting is unnecessary for -20°C storage

***** 20ul sizes contain 0.1% BSA**

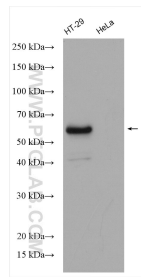
For technical support and original validation data for this product please contact:

T: 1 (888) 4PTGLAB (1-888-478-4522) (toll free in USA), or 1(312) 455-8498 (outside USA)

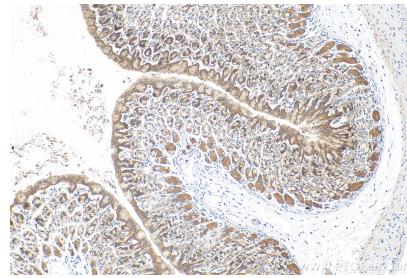
E: proteintech@ptglab.com
W: ptglab.com

This product is exclusively available under Proteintech Group brand and is not available to purchase from any other manufacturer.

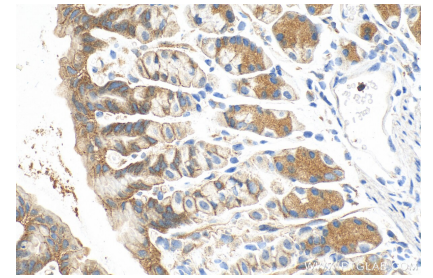
Selected Validation Data



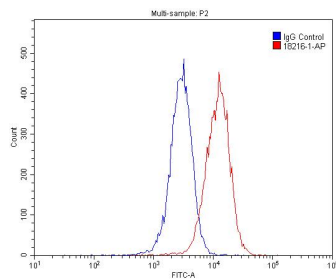
HT-29 cells (LSR+) and HeLa cells (LSR-) were subjected to SDS PAGE followed by western blot with 18216-1-AP (LSR antibody) at dilution of 1:1000 incubated at room temperature for 1.5 hours.



Immunohistochemical analysis of paraffin-embedded mouse stomach tissue slide using 18216-1-AP (LSR antibody) at dilution of 1:1000 (under 10x lens). Heat mediated antigen retrieval with Tris-EDTA buffer (pH 9.0).



Immunohistochemical analysis of paraffin-embedded mouse stomach tissue slide using 18216-1-AP (LSR antibody) at dilution of 1:1000 (under 40x lens). Heat mediated antigen retrieval with Tris-EDTA buffer (pH 9.0).



1×10^6 HepG2 cells were stained with .2ug LSR antibody (18216-1-AP, red) and control antibody (blue). Fixed with 4% PFA blocked with 3% BSA (30 min). Alexa Fluor 488-conjugated AffiniPure Goat Anti-Rabbit IgG(H+L) with dilution 1:1500.