

For Research Use Only

# LMX1B Polyclonal antibody

Catalog Number: 18278-1-AP

Featured Product

7 Publications



## Basic Information

<b>Catalog Number:</b> 18278-1-AP	<b>GenBank Accession Number:</b> BC112120	<b>Purification Method:</b> Antigen affinity purification
<b>Size:</b> 150ul , Concentration: 600 µg/ml by Nanodrop;	<b>GeneID (NCBI):</b> 4010	<b>Recommended Dilutions:</b> WB 1:1000-1:6000 IF 1:20-1:200
<b>Source:</b> Rabbit	<b>Full Name:</b> LIM homeobox transcription factor 1, beta	
<b>Isotype:</b> IgG	<b>Calculated MW:</b> 372 aa, 42 kDa	
<b>Immunogen Catalog Number:</b> AG13096	<b>Observed MW:</b> 42-45 kDa	

## Applications

<b>Tested Applications:</b> IF, WB, ELISA	<b>Positive Controls:</b> WB : HeLa cells, IF : embryonic kidney tissue,
<b>Cited Applications:</b> ChIP, IF, IHC, IP, WB	
<b>Species Specificity:</b> human, mouse, rat	
<b>Cited Species:</b> human, rat, mouse	

## Background Information

LMX1B, LIM homeodomain factor 1b, functions as a transcription factor, and is essential for the normal development of dorsal limb structures, the glomerular basement membrane, the anterior segment of the eye, and dopaminergic and serotonergic neurons. Lmx1b is a continuously expressed, terminal selector-type factor in 5-HT neurons. It is required for maintenance of central serotonergic neurons (PMID: 17151281, PMID: 14602809). It is expressed in brain, testis, skeletal muscle, and pancreatic islets (PMID: 35417751, PMID: 18512225).

## Notable Publications

Author	Pubmed ID	Journal	Application
Zi-Yang Zhang	32606037	Sci Signal	IHC
Chunbao Zang	31545286	Biomed Pharmacother	WB
Petros Stathakos	32286126	Autophagy	

## Storage

**Storage:**  
Store at -20°C. Stable for one year after shipment.  
**Storage Buffer:**  
PBS with 0.02% sodium azide and 50% glycerol pH 7.3.  
Aliquoting is unnecessary for -20°C storage

\*\*\* 20ul sizes contain 0.1% BSA

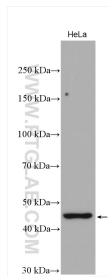
For technical support and original validation data for this product please contact:

T: 1 (888) 4PTGLAB (1-888-478-4522) (toll free in USA), or 1(312) 455-8498 (outside USA)

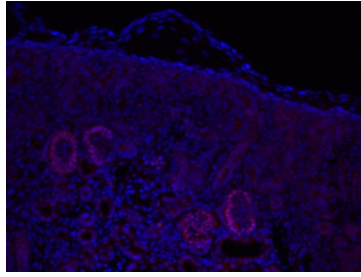
E: proteintech@ptglab.com  
W: ptglab.com

This product is exclusively available under Proteintech Group brand and is not available to purchase from any other manufacturer.

## Selected Validation Data



HeLa cells were subjected to SDS PAGE followed by western blot with 18278-1-AP (LMX1B antibody) at dilution of 1:3000 incubated at room temperature for 1.5 hours.



IF result of anti-LMX1B (18278-1-AP, 1:900) with embryonic kidney by Dr. Joo-Seop Park. Red: Podocytes, anti-rabbit Alexa555; Blue: Hoechst.