

For Research Use Only

TBC1D22A Polyclonal antibody

Catalog Number: 18332-1-AP



Basic Information

Catalog Number: 18332-1-AP	GenBank Accession Number: BC001292	Purification Method: Antigen affinity purification
Size: 150ul , Concentration: 400 µg/ml by Nanodrop and 273 µg/ml by Bradford method using BSA as the standard;	GeneID (NCBI): 25771	Recommended Dilutions: WB 1:500-1:3000 IHC 1:20-1:200 IF 1:20-1:200
Source: Rabbit	Full Name: TBC1 domain family, member 22A	
Isotype: IgG	Calculated MW: 59 kDa	
Immunogen Catalog Number: AG12942	Observed MW: 59 kDa	

Applications

Tested Applications: IF, IHC, WB, ELISA	Positive Controls:
Species Specificity: human, mouse, rat	WB : HeLa cells, COLO 320 cells
Note-IHC: suggested antigen retrieval with TE buffer pH 9.0; (*) Alternatively, antigen retrieval may be performed with citrate buffer pH 6.0	IHC : human cervical cancer tissue, human cervix tissue, human kidney tissue
	IF : HeLa cells,

Background Information

Storage

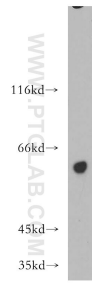
Storage:
Store at -20°C. Stable for one year after shipment.
Storage Buffer:
PBS with 0.02% sodium azide and 50% glycerol pH 7.3.
Aliquoting is unnecessary for -20°C storage

*** 20ul sizes contain 0.1% BSA

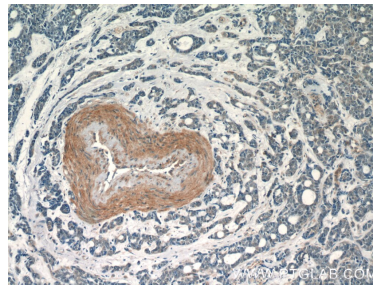
For technical support and original validation data for this product please contact:
T: 1 (888) 4PTGLAB (1-888-478-4522) (toll free in USA), or 1(312) 455-8498 (outside USA)
E: proteintech@ptglab.com
W: ptglab.com

This product is exclusively available under Proteintech Group brand and is not available to purchase from any other manufacturer.

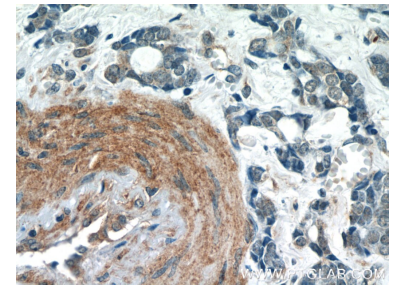
Selected Validation Data



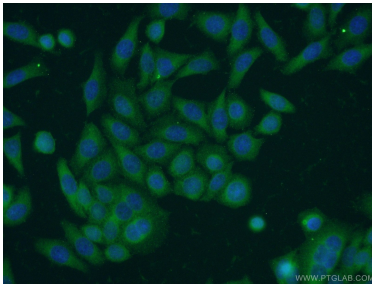
HeLa cells were subjected to SDS PAGE followed by western blot with 18332-1-AP (TBC1D22A antibody) at dilution of 1:500 incubated at room temperature for 1.5 hours.



Immunohistochemical analysis of paraffin-embedded human cervical cancer tissue slide using 18332-1-AP (TBC1D22A Antibody) at dilution of 1:50 (under 10x lens).



Immunohistochemical analysis of paraffin-embedded human cervical cancer tissue slide using 18332-1-AP (TBC1D22A Antibody) at dilution of 1:50 (under 40x lens).



Immunofluorescent analysis of HeLa cells using 18332-1-AP (TBC1D22A antibody) at dilution of 1:50 and Alexa Fluor 488-conjugated AffiniPure Goat Anti-Rabbit IgG(H+L).