

For Research Use Only

# Cytokeratin 17 Polyclonal antibody

Catalog Number: 18502-1-AP

1 Publications



## Basic Information

### Catalog Number:

18502-1-AP

### Size:

150ul, Concentration: 350 µg/ml by Nanodrop and 220 µg/ml by Bradford method using BSA as the standard;

### Source:

Rabbit

### Isotype:

IgG

### Immunogen Catalog Number:

AG13351

### GenBank Accession Number:

BC011901

### GeneID (NCBI):

3872

### UNIPROT ID:

Q04695

### Full Name:

keratin 17

### Calculated MW:

48 kDa

### Observed MW:

48 kDa

### Purification Method:

Antigen affinity purification

### Recommended Dilutions:

WB 1:500-1:3000

IP 0.5-4.0 ug for 1.0-3.0 mg of total protein lysate

IHC 1:20-1:200

IF 1:200-1:800

## Applications

### Tested Applications:

FC, IF, IHC, IP, WB, ELISA

### Cited Applications:

ELISA, IF, IHC, WB

### Species Specificity:

human, mouse, rat

### Cited Species:

human, mouse

**Note-IHC: suggested antigen retrieval with TE buffer pH 9.0; (\*) Alternatively, antigen retrieval may be performed with citrate buffer pH 6.0**

### Positive Controls:

WB : HeLa cells, A431 cells

IP : HeLa cells,

IHC : human cervical cancer tissue, human lung cancer tissue, human colon cancer tissue, human pancreas cancer tissue, human skin tissue

IF : HeLa cells,

## Background Information

Keratins are a large family of proteins that form the intermediate filaments that make up the cytoskeleton. Type I keratins are a group of acidic intermediate filament proteins and type II keratins are the basic or neutral counterparts. Keratin 17 is encoded by the KRT17 gene and is a type I cytokeratin found in nail beds, hair follicles, sebaceous glands, and epidermal appendages. The molecular weight of cytokeratin 17 is approximately 49 kDa. Cytokeratin 17 plays a role in the formation and maintenance of epidermal appendages, especially in determining the shape and orientation of hair. It is required for the maintenance of the anagen (growth) state of hair follicles by modulating the function of TNF-alpha for hair cycling and is also involved in tissue repair (PMID: 16702408).

## Notable Publications

Author	Pubmed ID	Journal	Application
Peng Zhou	38205163	J Endocr Soc	WB,IHC,IF,ELISA

## Storage

### Storage:

Store at -20°C. Stable for one year after shipment.

### Storage Buffer:

PBS with 0.02% sodium azide and 50% glycerol pH 7.3.

Aliquoting is unnecessary for -20°C storage

\*\*\* 20ul sizes contain 0.1% BSA

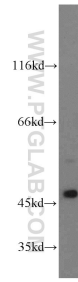
For technical support and original validation data for this product please contact:

T: 1 (888) 4PTGLAB (1-888-478-4522) (toll free in USA), or 1(312) 455-8498 (outside USA)

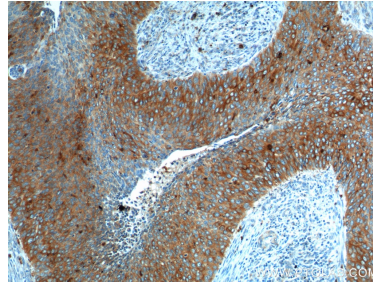
E: proteintech@ptglab.com  
W: ptglab.com

This product is exclusively available under Proteintech Group brand and is not available to purchase from any other manufacturer.

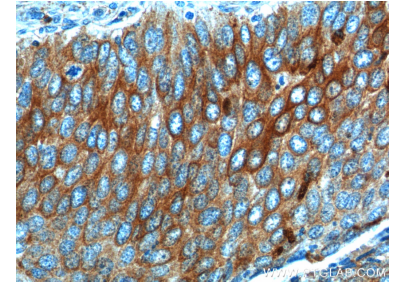
## Selected Validation Data



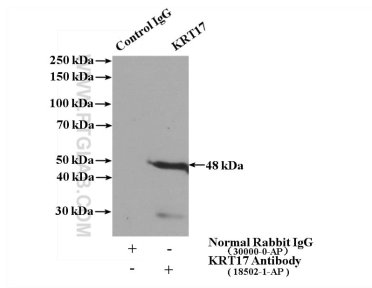
HeLa cells were subjected to SDS PAGE followed by western blot with 18502-1-AP (Cytokeratin 17 antibody) at dilution of 1:600 incubated at room temperature for 1.5 hours.



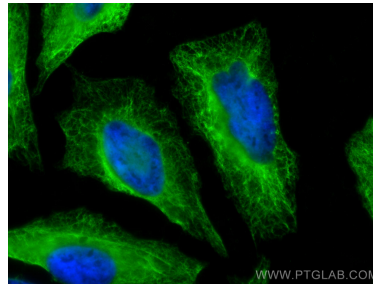
Immunohistochemical analysis of paraffin-embedded human cervical cancer tissue slide using 18502-1-AP (Cytokeratin 17 antibody at dilution of 1:200 (under 10x lens).



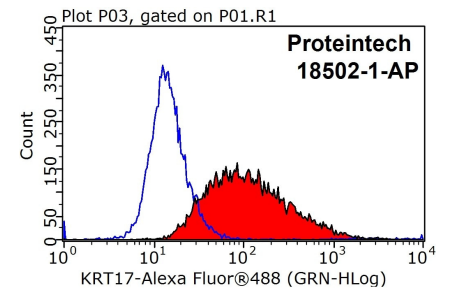
Immunohistochemical analysis of paraffin-embedded human cervical cancer tissue slide using 18502-1-AP (Cytokeratin 17 antibody at dilution of 1:200 (under 40x lens).



IP Result of anti-Cytokeratin 17 (IP:18502-1-AP, 4ug; Detection:18502-1-AP 1:600) with HeLa cells lysate 1600ug.



Immunofluorescent analysis of (-20°C Ethanol) fixed HeLa cells using Cytokeratin 17 antibody (18502-1-AP) at dilution of 1:400 and CoraLite®488-Conjugated AffiniPure Goat Anti-Rabbit IgG(H+L).



1X10<sup>6</sup> HeLa cells were stained with 0.2ug Cytokeratin 17 antibody (18502-1-AP, red) and control antibody (blue). Fixed with 90% MeOH blocked with 3% BSA (30 min). Alexa Fluor 488-conjugated AffiniPure Goat Anti-Rabbit IgG(H+L) with dilution 1:1000.