

For Research Use Only

# GABARAPL1-Specific Polyclonal antibody



Catalog Number: 18721-1-AP

3 Publications

## Basic Information

<b>Catalog Number:</b> 18721-1-AP	<b>GenBank Accession Number:</b> NM_031412	<b>Purification Method:</b> Antigen affinity purification
<b>Size:</b> 150ul , Concentration: 500 µg/ml by Nanodrop and 247 µg/ml by Bradford method using BSA as the standard;	<b>GeneID (NCBI):</b> 23710	<b>Recommended Dilutions:</b> WB 1:2000-1:10000 IHC 1:20-1:200
<b>Source:</b> Rabbit	<b>Full Name:</b> GABA(A) receptor-associated protein like 1	
<b>Isotype:</b> IgG	<b>Calculated MW:</b> 14 kDa	
	<b>Observed MW:</b> 17 kDa	

## Applications

<b>Tested Applications:</b> FC, IHC, WB, ELISA	<b>Positive Controls:</b>
<b>Cited Applications:</b> WB	<b>WB :</b> mouse brain tissue, human heart tissue, human spleen tissue, mouse kidney tissue, mouse liver tissue, rat brain tissue
<b>Species Specificity:</b> human, mouse, rat	<b>IHC :</b> human kidney tissue, mouse brain tissue
<b>Cited Species:</b> human	
<b>Note-IHC: suggested antigen retrieval with TE buffer pH 9.0; (*) Alternatively, antigen retrieval may be performed with citrate buffer pH 6.0</b>	

## Background Information

GABARAPL1 (GABARAP-like protein 1), also named as ATG8, GEC1, APG8L, ATG8L and APG8-LIKE, is a member of GABARP (GABAA receptor-associated protein) family. GABARAPL1 was initially identified as estrogen-regulated gene and the protein acts in receptor and vesicle transport. It's also involved in the process of autophagy like GABARAP and GABARAPL2, and may be considered as an autophagic marker. It is expressed at very high levels in the brain, heart, peripheral blood leukocytes, liver, kidney, placenta and skeletal muscle. And at very low levels in thymus and small intestine. The antibody is specific to GABARAPL1, and it doesn't recognize the recombinant GABARAP and GABARAPL2.

## Notable Publications

Author	Pubmed ID	Journal	Application
Pengfei Xu	36435763	BMC Musculoskelet Disord	WB
Alexandra Boeske	28729737	Sci Rep	WB
Le Grand Jaclyn Nicole JN	21862879	Autophagy	WB

## Storage

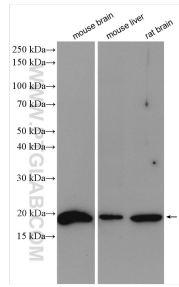
**Storage:**  
Store at -20°C. Stable for one year after shipment.  
**Storage Buffer:**  
PBS with 0.02% sodium azide and 50% glycerol pH 7.3.  
**Aliquoting is unnecessary for -20°C storage**

\*\*\* 20ul sizes contain 0.1% BSA

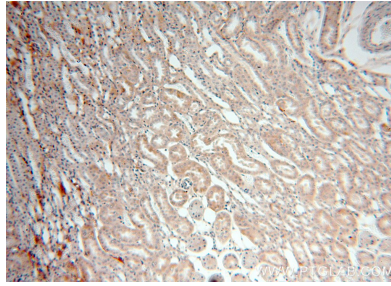
For technical support and original validation data for this product please contact:  
T: 1 (888) 4PTGLAB (1-888-478-4522) (toll free in USA), or 1(312) 455-8498 (outside USA)  
E: [proteintech@ptglab.com](mailto:proteintech@ptglab.com)  
W: [ptglab.com](http://ptglab.com)

This product is exclusively available under Proteintech Group brand and is not available to purchase from any other manufacturer.

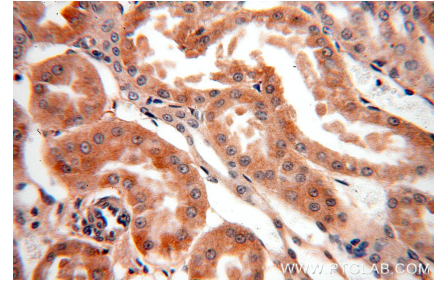
## Selected Validation Data



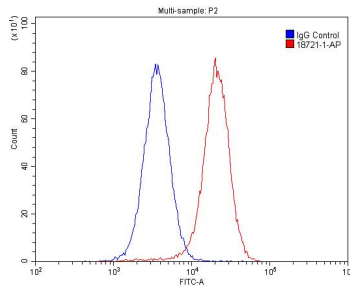
Various lysates were subjected to SDS PAGE followed by western blot with 18721-1-AP (GABARAPL1 antibody) at dilution of 1:5000 incubated at room temperature for 1.5 hours.



Immunohistochemical analysis of paraffin-embedded human kidney using 18721-1-AP (GABARAPL1 antibody) at dilution of 1:100 (under 10x lens).



Immunohistochemical analysis of paraffin-embedded human kidney using 18721-1-AP (GABARAPL1 antibody) at dilution of 1:100 (under 40x lens).



1X10<sup>6</sup> HepG2 cells were stained with 0.2ug GABARAPL1 antibody (18721-1-AP, red) and control antibody (blue). Cells were fixed with 4% PFA and permeabilized with 0.1% Triton X-100. Alexa Fluor 488-conjugated AffiniPure Goat Anti-Rabbit IgG(H+L) with dilution 1:1500.