

For Research Use Only

# Twinkle/PEO1 Polyclonal antibody

Catalog Number: 18793-1-AP



## Basic Information

<b>Catalog Number:</b> 18793-1-AP	<b>GenBank Accession Number:</b> BC033762	<b>Purification Method:</b> Antigen affinity purification
<b>Size:</b> 150ul , Concentration: 500 µg/ml by Nanodrop;	<b>GeneID (NCBI):</b> 56652	<b>Recommended Dilutions:</b> WB 1:1000-1:5000 IHC 1:20-1:200
<b>Source:</b> Rabbit	<b>Full Name:</b> chromosome 10 open reading frame 2	
<b>Isotype:</b> IgG	<b>Calculated MW:</b> 684 aa, 77 kDa	
<b>Immunogen Catalog Number:</b> AG6628	<b>Observed MW:</b> 60 kDa	

## Applications

**Tested Applications:**  
IHC, WB, ELISA

**Species Specificity:**  
human

**Note-IHC: suggested antigen retrieval with TE buffer pH 9.0; (\*) Alternatively, antigen retrieval may be performed with citrate buffer pH 6.0**

**Positive Controls:**

**WB:** Daudi cells, MCF-7 cells, K-562 cells, HeLa cells

**IHC:** human pancreas tissue, human skeletal muscle tissue

## Background Information

Twinkle, also named as Progressive external ophthalmoplegia 1 protein is a 684 amino acid protein, which involves in mitochondrial DNA (mtDNA) metabolism. The predicted full-length protein is 684 amino acids, with a molecular mass of 77 kD, whereas the splice variant mRNA encodes a 66-kD product of 582 amino acids, lacking residues 579-684 and terminating with four unique amino acids (PMID: 11431692).

## Storage

**Storage:**

Store at -20°C. Stable for one year after shipment.

**Storage Buffer:**

PBS with 0.02% sodium azide and 50% glycerol pH 7.3.

Aliquoting is unnecessary for -20°C storage

\*\*\* 20ul sizes contain 0.1% BSA

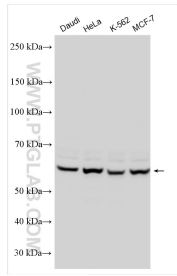
For technical support and original validation data for this product please contact:

T: 1 (888) 4PTGLAB (1-888-478-4522) (toll free in USA), or 1(312) 455-8498 (outside USA)

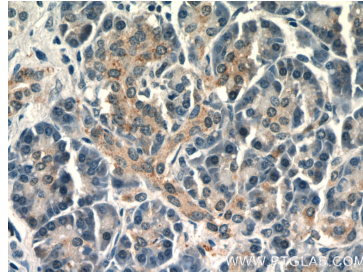
E: proteintech@ptglab.com  
W: ptglab.com

This product is exclusively available under Proteintech Group brand and is not available to purchase from any other manufacturer.

## Selected Validation Data



Various lysates were subjected to SDS PAGE followed by western blot with 18793-1-AP (Twinkle antibody) at dilution of 1:2500 incubated at room temperature for 1.5 hours.



Immunohistochemical analysis of paraffin-embedded human pancreas tissue slide using 18793-1-AP (Twinkle antibody at dilution of 1:50).