

For Research Use Only

CRISP2 Polyclonal antibody

Catalog Number: 19066-1-AP

Featured Product

8 Publications



Basic Information

Catalog Number:
19066-1-AP

Size:
150ul, Concentration: 500 µg/ml by Nanodrop and 313 µg/ml by Bradford method using BSA as the standard;

Source:
Rabbit

Isotype:
IgG

Immunogen Catalog Number:
AG13574

GenBank Accession Number:
BC022011

GeneID (NCBI):
7180

Full Name:
cysteine-rich secretory protein 2

Calculated MW:
27 kDa

Observed MW:
27 kDa

Purification Method:
Antigen affinity purification

Recommended Dilutions:
WB 1:500-1:1000
IP 0.5-4.0 ug for IP and 1:200-1:1000 for WB
IHC 1:20-1:200

Applications

Tested Applications:
IHC, IP, WB, ELISA

Cited Applications:
IF, WB

Species Specificity:
human, mouse, rat

Cited Species:
human, mouse, pig

Note-IHC: suggested antigen retrieval with TE buffer pH 9.0; (*) Alternatively, antigen retrieval may be performed with citrate buffer pH 6.0

Positive Controls:

WB: mouse testis tissue, human testis tissue, rat testis tissue

IP: mouse testis tissue,

IHC: human testis tissue,

Background Information

Notable Publications

Author	Pubmed ID	Journal	Application
L Curci	33037689	FASEB J	WB
Deqiang Ding	29018194	Nat Commun	IF
M Zhang	34309660	Biol Reprod	IF, WB

Storage

Storage:

Store at -20°C. Stable for one year after shipment.

Storage Buffer:

PBS with 0.02% sodium azide and 50% glycerol pH 7.3.

Aliquoting is unnecessary for -20°C storage

*** 20ul sizes contain 0.1% BSA

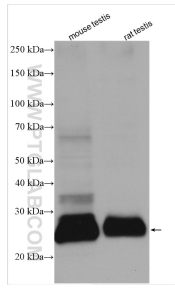
For technical support and original validation data for this product please contact:

T: 1 (888) 4PTGLAB (1-888-478-4522) (toll free in USA), or 1(312) 455-8498 (outside USA)

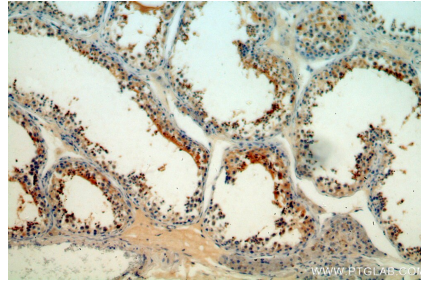
E: proteintech@ptglab.com
W: ptglab.com

This product is exclusively available under Proteintech Group brand and is not available to purchase from any other manufacturer.

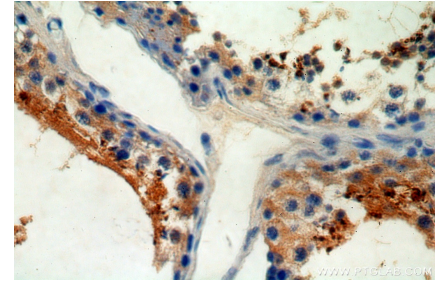
Selected Validation Data



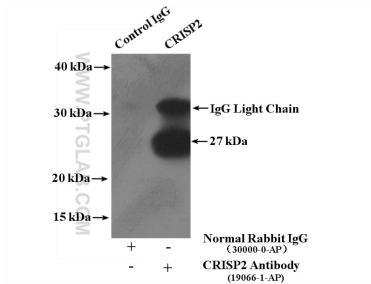
Various lysates were subjected to SDS PAGE followed by western blot with 19066-1-AP (CRISP2 antibody) at dilution of 1:600 incubated at room temperature for 1.5 hours.



Immunohistochemical analysis of paraffin-embedded human testis using 19066-1-AP (CRISP2 antibody) at dilution of 1:50 (under 10x lens).



Immunohistochemical analysis of paraffin-embedded human testis using 19066-1-AP (CRISP2 antibody) at dilution of 1:50 (under 40x lens).



IP Result of anti-CRISP2 (IP:19066-1-AP, 4ug; Detection:19066-1-AP 1:300) with mouse testis tissue lysate 4000ug.