

For Research Use Only

FKBP6 Polyclonal antibody

Catalog Number: 19163-1-AP



Basic Information

Catalog Number: 19163-1-AP	GenBank Accession Number: BC036817	Purification Method: Antigen affinity purification
Size: 150ul , Concentration: 500 µg/ml by Nanodrop;	GeneID (NCBI): 8468	Recommended Dilutions: WB 1:500-1:1000 IF 1:10-1:100
Source: Rabbit	Full Name: FK506 binding protein 6, 36kDa	
Isotype: IgG	Calculated MW: 327 aa, 37 kDa	
Immunogen Catalog Number: AG4642	Observed MW: 36 kDa	

Applications

Tested Applications: IF, WB, ELISA	Positive Controls:
Species Specificity: human, mouse, rat	WB : rat testis tissue, human testis tissue, mouse testis tissue IF : MCF-7 cells,

Background Information

Inactive peptidyl-prolyl cis-trans isomerase FKBP6 (FKBP6), also known as 36 kDa FK506-binding protein (36 kDa FKBP; FKBP-36), is a member of a gene family that contains a prolyl isomerase/FK506 binding domain and tetratricopeptide protein-protein interaction domains (PMID: 9782077). It has been linked to the secondary piRNA biogenesis in fetal male mouse germ cells (PMID: 22902560).

Storage

Storage:
Store at -20°C. Stable for one year after shipment.
Storage Buffer:
PBS with 0.02% sodium azide and 50% glycerol pH 7.3.
Aliquoting is unnecessary for -20°C storage

*** 20ul sizes contain 0.1% BSA

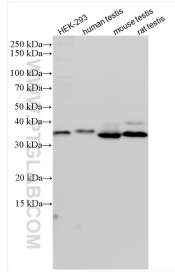
For technical support and original validation data for this product please contact:

T: 1 (888) 4PTGLAB (1-888-478-4522) (toll free in USA), or 1(312) 455-8498 (outside USA)

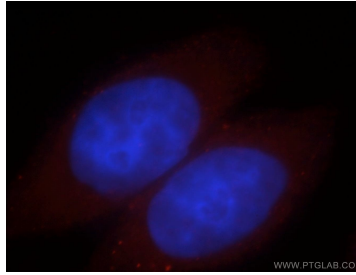
E: proteintech@ptglab.com
W: ptglab.com

This product is exclusively available under Proteintech Group brand and is not available to purchase from any other manufacturer.

Selected Validation Data



Various lysates were subjected to SDS PAGE followed by western blot with 19163-1-AP (FKBP6 antibody) at dilution of 1:800 incubated at room temperature for 1.5 hours.



Immunofluorescent analysis of MCF-7 cells, using FKBP6 antibody 19163-1-AP at 1:25 dilution and Rhodamine-labeled goat anti-rabbit IgG (red). Blue pseudocolor = DAPI (fluorescent DNA dye).