

For Research Use Only

# Gastrokine 1 Polyclonal antibody

Catalog Number: 19344-1-AP **2 Publications**



## Basic Information

<b>Catalog Number:</b> 19344-1-AP	<b>GenBank Accession Number:</b> BC059778	<b>Purification Method:</b> Antigen affinity purification
<b>Size:</b> 150ul , Concentration: 450 µg/ml by Nanodrop and 433 µg/ml by Bradford method using BSA as the standard;	<b>GeneID (NCBI):</b> 56287	<b>Recommended Dilutions:</b> WB 1:1000-1:4000 IHC 1:20-1:200
<b>Source:</b> Rabbit	<b>Full Name:</b> gastrokine 1	
<b>Isotype:</b> IgG	<b>Calculated MW:</b> 22 kDa	
<b>Immunogen Catalog Number:</b> AG6091	<b>Observed MW:</b> 20-22 kDa	

## Applications

<b>Tested Applications:</b> IHC, WB, ELISA	<b>Positive Controls:</b> WB : human stomach tissue, mouse stomach tissue
<b>Cited Applications:</b> IHC, WB	<b>IHC :</b> human stomach tissue,
<b>Species Specificity:</b> human, mouse	
<b>Cited Species:</b> human, mouse	

**Note-IHC: suggested antigen retrieval with TE buffer pH 9.0; (\*) Alternatively, antigen retrieval may be performed with citrate buffer pH 6.0**

## Background Information

Gastrokine 1 (GKN1), a stomach-specific protein also known as 18 kDa antrum mucosa protein (AMP-18) or foveolin, belongs to the gastrokine family of gastric mucus cell-secreted proteins. The human GKN1 gene has been localized in a region of chromosome 2p13 of about 6 kb and contains 6 exons. GKN1 is expressed only in normal human stomach, but is absent from gastric adenocarcinomas, gastro-esophageal adenocarcinoma cell lines, and other normal and tumor gastro-intestinal tissues. GKN1 may play an important role in normal gastric function and may be a gastric tumour suppressor.

## Notable Publications

Author	Pubmed ID	Journal	Application
Yanlei Guo	31657090	Helicobacter	WB, IHC
Anne-Marie C Overstreet	33947892	Sci Rep	WB

## Storage

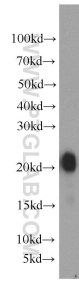
**Storage:**  
Store at -20°C. Stable for one year after shipment.  
**Storage Buffer:**  
PBS with 0.02% sodium azide and 50% glycerol pH 7.3.  
Aliquoting is unnecessary for -20°C storage

**\*\*\* 20ul sizes contain 0.1% BSA**

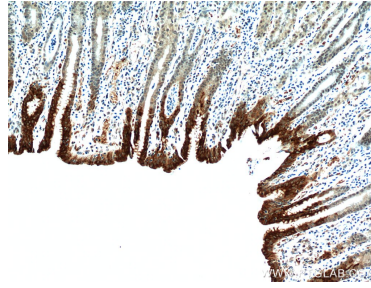
For technical support and original validation data for this product please contact:  
T: 1 (888) 4PTGLAB (1-888-478-4522) (toll free in USA), or 1(312) 455-8498 (outside USA)  
E: proteintech@ptglab.com  
W: ptglab.com

**This product is exclusively available under Proteintech Group brand and is not available to purchase from any other manufacturer.**

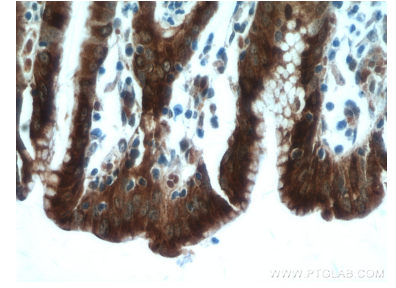
## Selected Validation Data



human stomach tissue were subjected to SDS PAGE followed by western blot with 19344-1-AP (Gastrokine 1 antibody) at dilution of 1:2000 incubated at room temperature for 1.5 hours.



Immunohistochemical analysis of paraffin-embedded human stomach using 19344-1-AP (Gastrokine 1 antibody) at dilution of 1:100 (under 10x lens).



Immunohistochemical analysis of paraffin-embedded human stomach using 19344-1-AP (Gastrokine 1 antibody) at dilution of 1:100 (under 40x lens).