

For Research Use Only

# SENP5-Specific Polyclonal antibody

Catalog Number: 19529-1-AP

Featured Product

9 Publications



## Basic Information

Catalog Number:  
19529-1-AP

Size:  
150ul, Concentration: 1000 µg/ml by  
Nanodrop and 487 µg/ml by Bradford  
method using BSA as the standard;

Source:  
Rabbit

Isotype:  
IgG

GenBank Accession Number:  
NM\_152699

GeneID (NCBI):  
205564

Full Name:  
SUMO1/sentrin specific peptidase 5

Calculated MW:  
87 kDa

Observed MW:  
97 kDa

Purification Method:  
Antigen affinity purification

Recommended Dilutions:  
WB 1:1000-1:6000  
IP 0.5-4.0 µg for IP and 1:200-1:1000  
for WB  
IHC 1:200-1:600

## Applications

Tested Applications:  
IHC, IP, WB, ELISA

Cited Applications:  
CoIP, IF, IHC, WB

Species Specificity:  
human, mouse, rat

Cited Species:  
human, mouse

**Note-IHC: suggested antigen retrieval with  
TE buffer pH 9.0; (\*) Alternatively, antigen  
retrieval may be performed with citrate  
buffer pH 6.0**

Positive Controls:

WB: HeLa cells, mouse liver tissue, HepG2 cells

IP: HeLa cells,

IHC: human cervical cancer tissue, human placenta  
tissue

## Background Information

SENP5, also named as FKSG45, belongs to the peptidase C48 family. SENP5 is a protease that catalyzes two essential functions in the SUMO pathway: processing of full-length SUMO3 to its mature form and deconjugation of SUMO2 and SUMO3 from targeted proteins. SENP5 has weak proteolytic activity against full-length SUMO1 or SUMO1 conjugates. It is required for cell division. The antibody is specific to SENP5.

## Notable Publications

Author	Pubmed ID	Journal	Application
Mamta Amrute-Nayak	36417853	Cell Rep	WB
Bin Yu	34060616	J Cell Sci	WB
Bin Yu	34313310	J Cell Sci	WB

## Storage

Storage:

Store at -20°C. Stable for one year after shipment.

Storage Buffer:

PBS with 0.02% sodium azide and 50% glycerol pH 7.3.

Aliquoting is unnecessary for -20°C storage

\*\*\* 20ul sizes contain 0.1% BSA

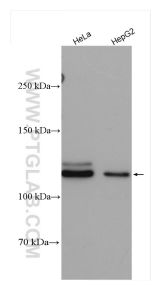
For technical support and original validation data for this product please contact:

T: 1 (888) 4PTGLAB (1-888-478-4522) (toll free  
in USA), or 1(312) 455-8498 (outside USA)

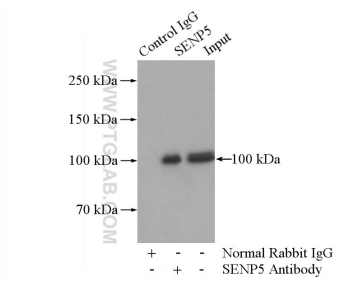
E: proteintech@ptglab.com  
W: ptglab.com

This product is exclusively available under Proteintech  
Group brand and is not available to purchase from any  
other manufacturer.

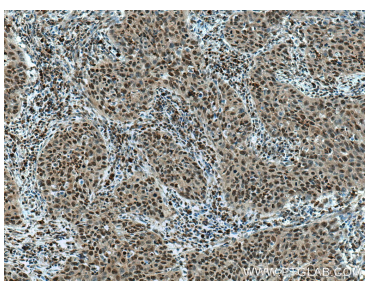
Selected Validation Data



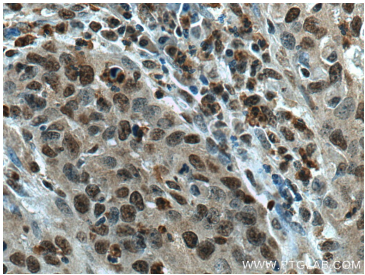
Various lysates were subjected to SDS PAGE followed by western blot with 19529-1-AP (SENP5-Specific antibody) at dilution of 1:3000 incubated at room temperature for 1.5 hours.



IP Result of anti-SENP5-Specific (IP:19529-1-AP, 4ug; Detection:19529-1-AP 1:300) with HeLa cells lysate 520ug.



Immunohistochemical analysis of paraffin-embedded human cervical cancer tissue slide using 19529-1-AP (SENP5-Specific antibody) at dilution of 1:200 (under 10x lens). Heat mediated antigen retrieval with Tris-EDTA buffer (pH 9.0).



Immunohistochemical analysis of paraffin-embedded human cervical cancer tissue slide using 19529-1-AP (SENP5-Specific antibody) at dilution of 1:200 (under 40x lens). Heat mediated antigen retrieval with Tris-EDTA buffer (pH 9.0).