

For Research Use Only

# persephin-Specific Polyclonal antibody



Catalog Number: 19713-1-AP

1 Publications

## Basic Information

<b>Catalog Number:</b> 19713-1-AP	<b>GenBank Accession Number:</b> NM_004158	<b>Purification Method:</b> Antigen affinity purification
<b>Size:</b> 150ul , Concentration: 600 µg/ml by Nanodrop and 380 µg/ml by Bradford method using BSA as the standard;	<b>GeneID (NCBI):</b> 5623	<b>Recommended Dilutions:</b> WB 1:500-1:1000 IHC 1:20-1:200 IF 1:50-1:500
<b>Source:</b> Rabbit	<b>Full Name:</b> persephin	
<b>Isotype:</b> IgG	<b>Calculated MW:</b> 17 kDa	
	<b>Observed MW:</b> 17 kDa	

## Applications

### Tested Applications:

IF, IHC, WB, ELISA

### Cited Applications:

WB

### Species Specificity:

human

**Note-IHC: suggested antigen retrieval with TE buffer pH 9.0; (\*) Alternatively, antigen retrieval may be performed with citrate buffer pH 6.0**

### Positive Controls:

WB : SH-SY5Y cells, HepG2 cells

IHC : human brain tissue,

IF : SH-SY5Y cells,

## Background Information

PSPN, also named as PSP, belongs to the TGF-beta family and GDNF subfamily. PSPN exhibits neurotrophic activity on mesencephalic dopaminergic and motor neurons. The antibody is specific to PSPN.

## Notable Publications

Author	Pubmed ID	Journal	Application
Kathryn Stein	28248428	Biol Cell	WB

## Storage

### Storage:

Store at -20°C. Stable for one year after shipment.

### Storage Buffer:

PBS with 0.02% sodium azide and 50% glycerol pH 7.3.

Aliquoting is unnecessary for -20°C storage

\*\*\* 20ul sizes contain 0.1% BSA

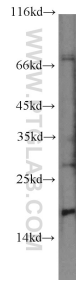
For technical support and original validation data for this product please contact:

T: 1 (888) 4PTGLAB (1-888-478-4522) (toll free in USA), or 1(312) 455-8498 (outside USA)

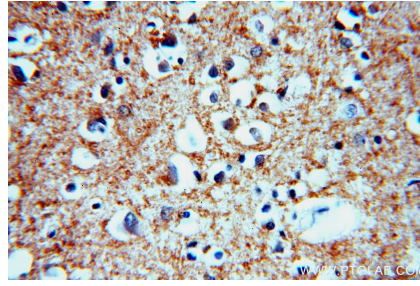
E: proteintech@ptglab.com  
W: ptglab.com

This product is exclusively available under Proteintech Group brand and is not available to purchase from any other manufacturer.

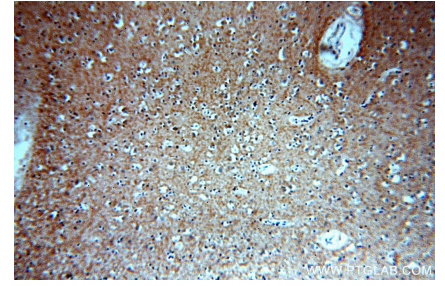
## Selected Validation Data



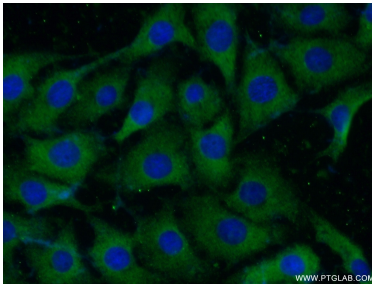
SH-SY5Y cells were subjected to SDS PAGE followed by western blot with 19713-1-AP (persephin-Specific antibody) at dilution of 1:500 incubated at room temperature for 1.5 hours.



Immunohistochemical analysis of paraffin-embedded human brain using 19713-1-AP (persephin-Specific antibody) at dilution of 1:50 (under 40x lens).



Immunohistochemical analysis of paraffin-embedded human brain using 19713-1-AP (persephin-Specific antibody) at dilution of 1:50 (under 10x lens).



Immunofluorescent analysis of (-20°C Ethanol) fixed SH-SY5Y cells using 19713-1-AP (persephin-Specific antibody) at dilution of 1:50 and Alexa Fluor 488-conjugated AffiniPure Goat Anti-Rabbit IgG(H+L).