

For Research Use Only

# KDM3B Polyclonal antibody

Catalog Number: 19915-1-AP **1 Publications**



## Basic Information

<b>Catalog Number:</b> 19915-1-AP	<b>GenBank Accession Number:</b> BC001202	<b>Purification Method:</b> Antigen affinity purification
<b>Size:</b> 150ul , Concentration: 650 µg/ml by Nanodrop and 407 µg/ml by Bradford method using BSA as the standard;	<b>GeneID (NCBI):</b> 51780	<b>Recommended Dilutions:</b> WB 1:2000-1:12000 IF 1:50-1:500
<b>Source:</b> Rabbit	<b>Full Name:</b> lysine (K)-specific demethylase 3B	
<b>Isotype:</b> IgG	<b>Calculated MW:</b> 1761 aa, 192 kDa	
<b>Immunogen Catalog Number:</b> AG13795	<b>Observed MW:</b> 192 kDa, 85 kDa	

## Applications

<b>Tested Applications:</b> IF, WB, ELISA	<b>Positive Controls:</b> WB : HEK-293 cells, human placenta tissue
<b>Cited Applications:</b> WB	<b>IF :</b> A431 cells,
<b>Species Specificity:</b> human, mouse	
<b>Cited Species:</b> human	

## Background Information

### Notable Publications

Author	Pubmed ID	Journal	Application
Yuan Li	32778823	Nat Genet	WB

## Storage

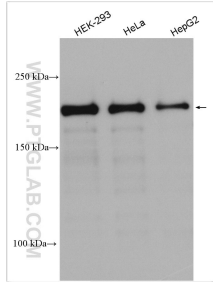
**Storage:**  
Store at -20°C. Stable for one year after shipment.  
**Storage Buffer:**  
PBS with 0.02% sodium azide and 50% glycerol pH 7.3.  
Aliquoting is unnecessary for -20°C storage

**\*\*\* 20ul sizes contain 0.1% BSA**

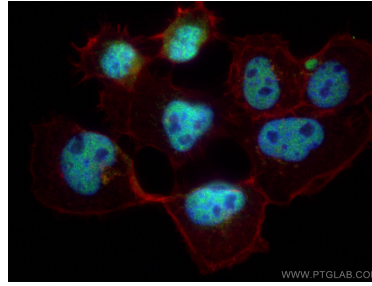
For technical support and original validation data for this product please contact:  
T: 1 (888) 4PTGLAB (1-888-478-4522) (toll free in USA), or 1(312) 455-8498 (outside USA)  
E: proteintech@ptglab.com  
W: ptglab.com

**This product is exclusively available under Proteintech Group brand and is not available to purchase from any other manufacturer.**

## Selected Validation Data



Various lysates were subjected to SDS PAGE followed by western blot with 19915-1-AP (KDM3B antibody) at dilution of 1:6000 incubated at room temperature for 1.5 hours.



Immunofluorescent analysis of (4% PFA) fixed A431 cells using KDM3B antibody (19915-1-AP) at dilution of 1:200 and CoraLite@488-Conjugated AffiniPure Goat Anti-Rabbit IgG(H+L), CL594-Phalloidin (red).