

For Research Use Only

# MAS1L-Specific Polyclonal antibody



Catalog Number: 20080-1-AP

14 Publications

## Basic Information

<b>Catalog Number:</b> 20080-1-AP	<b>GenBank Accession Number:</b> NM_052967	<b>Purification Method:</b> Antigen affinity purification
<b>Size:</b> 150ul , Concentration: 300 µg/ml by Nanodrop and 300 µg/ml by Bradford method using BSA as the standard;	<b>GeneID (NCBI):</b> 116511	<b>Recommended Dilutions:</b> WB 1:1000-1:4000 IHC 1:50-1:500 IF 1:10-1:100
<b>Source:</b> Rabbit	<b>Full Name:</b> MAS1 oncogene-like	
<b>Isotype:</b> IgG	<b>Calculated MW:</b> 42 kDa	
	<b>Observed MW:</b> 42 kDa	

## Applications

**Tested Applications:**  
IF, IHC, WB, ELISA

**Cited Applications:**  
IF, IHC, WB

**Species Specificity:**  
human, mouse

**Cited Species:**  
human, rat, mouse

**Note-IHC: suggested antigen retrieval with TE buffer pH 9.0; (\*) Alternatively, antigen retrieval may be performed with citrate buffer pH 6.0**

**Positive Controls:**

**WB:** HEK-293 cells, COLO 320 cells, HeLa cells, HepG2 cells, mouse liver tissue

**IHC:** mouse brain tissue,

**IF:** HepG2 cells,

## Background Information

MAS1L, also named as MRG, belongs to the G-protein coupled receptor 1 family and Mas subfamily. The antibody is specific to MAS1L.

## Notable Publications

Author	Pubmed ID	Journal	Application
Jing-Chao Su	36193122	Evid Based Complement Alternat Med	WB, IHC
Hang Pan	34045880	J Inflamm Res	WB
Peipei Feng	32184813	Neural Plast	WB

## Storage

**Storage:**

Store at -20°C. Stable for one year after shipment.

**Storage Buffer:**

PBS with 0.02% sodium azide and 50% glycerol pH 7.3.

Aliquoting is unnecessary for -20°C storage

\*\*\* 20ul sizes contain 0.1% BSA

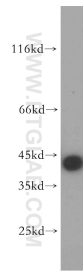
For technical support and original validation data for this product please contact:

T: 1 (888) 4PTGLAB (1-888-478-4522) (toll free in USA), or 1(312) 455-8498 (outside USA)

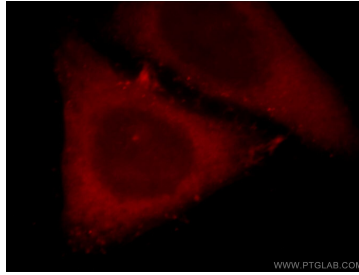
E: proteintech@ptglab.com  
W: ptglab.com

This product is exclusively available under Proteintech Group brand and is not available to purchase from any other manufacturer.

## Selected Validation Data



HEK-293 cells were subjected to SDS PAGE followed by western blot with 20080-1-AP (MAS1L-Specific antibody) at dilution of 1:500 incubated at room temperature for 1.5 hours.



Immunofluorescent analysis of HepG2 cells, using MAS1L antibody 20080-1-AP at 1:25 dilution and Rhodamine-labeled goat anti-rabbit IgG (red).