

RAB11A-Specific Polyclonal antibody

Catalog Number: 20229-1-AP

Featured Product

16 Publications

Basic Information

Catalog Number:

20229-1-AP

Size:

150ul, Concentration: 300 µg/ml by Nanodrop and 253 µg/ml by Bradford method using BSA as the standard;

Source:

Rabbit

Isotype:

IgG

GenBank Accession Number:

NM_004663

GeneID (NCBI):

8766

UNIPROT ID:

P62491

Full Name:

RAB11A, member RAS oncogene family

Calculated MW:

24 kDa

Observed MW:

24 kDa

Purification Method:

Antigen affinity purification

Recommended Dilutions:

WB 1:500-1:1000

IP 0.5-4.0 µg for 1.0-3.0 mg of total protein lysate

IHC 1:50-1:500

IF 1:50-1:500

Applications

Tested Applications:

WB, IP, IF, IHC, ELISA

Cited Applications:

WB, IF, IHC

Species Specificity:

human, mouse, rat

Cited Species:

human, rat, mouse, canine

Note-IHC: suggested antigen retrieval with TE buffer pH 9.0; (*) Alternatively, antigen retrieval may be performed with citrate buffer pH 6.0

Positive Controls:

WB: HEK-293T cells, human brain tissue, mouse colon tissue, SH-SY5Y cells, rat brain tissue, PC-12 cells, HeLa cells, MCF-7 cells, mouse lung tissue

IP: SH-SY5Y cells,

IHC: human small intestine tissue,

IF: HEK-293 cells,

Background Information

Rab11a, Rab11b and Rab25 comprise a subfamily of Rab proteins that belong to the Ras-related small GTPase protein superfamily (PMID: 8074219, PMID: 10708602). Rab11 proteins are involved in endocytosis and plasma membrane recycling in non-polarized and polarized cells (PMID: 8638719, PMID: 8922376). Rab11a and Rab11b are ubiquitously expressed in most tissues, while Rab25 is only expressed in epithelial cells. Rab11a is known to regulate the recycling of internalized cell surface proteins and receptors from the early endosome through the trans-Golgi network (PMID: 11121436, PMID: 9600939). The antibody is specific to RAB11A, and has no cross reaction to RAB11B.

Notable Publications

Author	Pubmed ID	Journal	Application
Ketaki Ganti	34473799	PLoS Pathog	IF
Hiroshi Gomi	28914590	J Histochem Cytochem	WB, IHC
Oliva Palander	33124112	FASEB J	IF

Storage

Storage:

Store at -20°C. Stable for one year after shipment.

Storage Buffer:

PBS with 0.02% sodium azide and 50% glycerol pH 7.3.

Aliquoting is unnecessary for -20°C storage

*** 20ul sizes contain 0.1% BSA

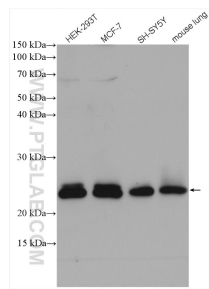
For technical support and original validation data for this product please contact:

T: 1 (888) 4PTGLAB (1-888-478-4522) (toll free in USA), or 1(312) 455-8498 (outside USA)

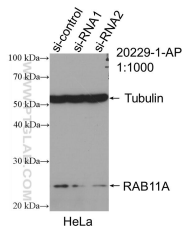
E: proteintech@ptglab.com
 W: ptglab.com

This product is exclusively available under Proteintech Group brand and is not available to purchase from any other manufacturer.

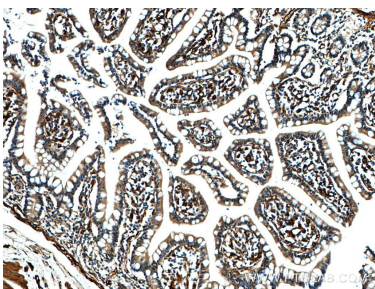
Selected Validation Data



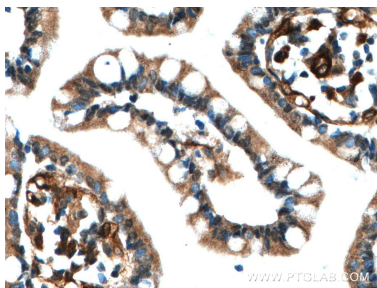
Various lysates were subjected to SDS PAGE followed by western blot with 20229-1-AP (RAB11A-Specific antibody) at dilution of 1:600 incubated at room temperature for 1.5 hours.



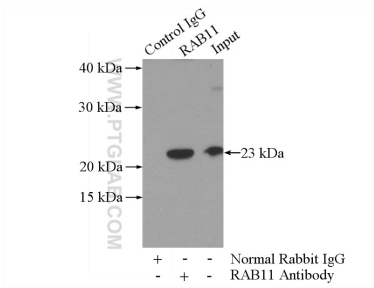
WB result of RAB11A-Specific antibody (20229-1-AP; 1:1000; incubated at room temperature for 1.5 hours) with sh-Control and sh-RAB11A-Specific transfected HeLa cells.



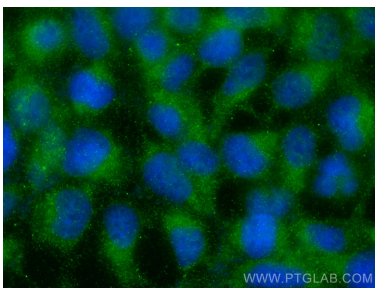
Immunohistochemical analysis of paraffin-embedded human small intestine tissue slide using 20229-1-AP (RAB11A-Specific antibody) at dilution of 1:200 (under 10x lens).



Immunohistochemical analysis of paraffin-embedded human small intestine tissue slide using 20229-1-AP (RAB11A-Specific antibody) at dilution of 1:200 (under 40x lens).



IP result of anti-RAB11A-Specific (IP:20229-1-AP, 3ug; Detection:20229-1-AP 1:700) with SH-SY5Y cells lysate 3000ug.



Immunofluorescent analysis of (-20°C Ethanol) fixed HEK-293 cells using RAB11A-Specific antibody (20229-1-AP) at dilution of 1:200 and CoraLite®488-Conjugated AffiniPure Goat Anti-Rabbit IgG(H+L).