

For Research Use Only

P2RY13 Polyclonal antibody

Catalog Number: 20335-1-AP **2 Publications**



Basic Information

Catalog Number: 20335-1-AP	GenBank Accession Number: BC041116	Purification Method: Antigen affinity purification
Size: 150ul, Concentration: 600 µg/ml by Nanodrop and 380 µg/ml by Bradford method using BSA as the standard;	GeneID (NCBI): 53829	Recommended Dilutions: WB 1:200-1:1000 IHC 1:20-1:200
Source: Rabbit	Full Name: purinergic receptor P2Y, G-protein coupled, 13	
Isotype: IgG	Calculated MW: 354 aa, 41 kDa	
Immunogen Catalog Number: AG14108	Observed MW: 45 kDa	

Applications

Tested Applications: FC, IHC, WB, ELISA	Positive Controls: WB : HeLa cells, HepG2 cells IHC : human small intestine tissue,
Cited Applications: IHC, WB	
Species Specificity: human	
Cited Species: human	
Note-IHC: suggested antigen retrieval with TE buffer pH 9.0; (*) Alternatively, antigen retrieval may be performed with citrate buffer pH 6.0	

Background Information

Notable Publications

Author	Pubmed ID	Journal	Application
Ruiqiao He	38049696	Nat Methods	WB
Jie Chu	38045624	Health Sci Rep	IHC

Storage

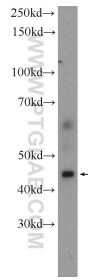
Storage:
Store at -20°C. Stable for one year after shipment.
Storage Buffer:
PBS with 0.02% sodium azide and 50% glycerol pH 7.3.
Aliquoting is unnecessary for -20°C storage

*** 20ul sizes contain 0.1% BSA

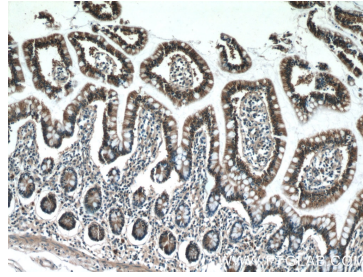
For technical support and original validation data for this product please contact:
T: 1 (888) 4PTGLAB (1-888-478-4522) (toll free in USA), or 1(312) 455-8498 (outside USA)
E: proteintech@ptglab.com
W: ptglab.com

This product is exclusively available under Proteintech Group brand and is not available to purchase from any other manufacturer.

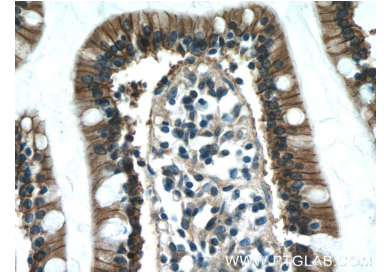
Selected Validation Data



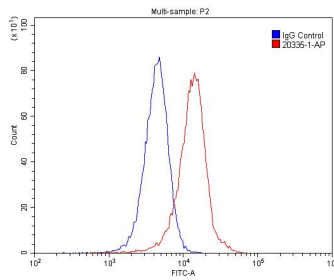
HeLa cells were subjected to SDS PAGE followed by western blot with 20335-1-AP (P2RY13 Antibody) at dilution of 1:300 incubated at room temperature for 1.5 hours.



Immunohistochemical analysis of paraffin-embedded human small intestine tissue slide using 20335-1-AP (P2RY13 Antibody) at dilution of 1:50 (under 10x lens).



Immunohistochemical analysis of paraffin-embedded human small intestine tissue slide using 20335-1-AP (P2RY13 Antibody) at dilution of 1:50 (under 40x lens).



1×10^6 HeLa cells were stained with .2ug P2RY13 antibody (20335-1-AP, red) and control antibody (blue). Fixed with 4% PFA blocked with 3% BSA (30 min). Alexa Fluor 488-conjugated AffiniPure Goat Anti-Rabbit IgG(H+L) with dilution 1:1500.