

For Research Use Only

HTATSF1 Polyclonal antibody

Catalog Number: 20805-1-AP

Featured Product

3 Publications



Basic Information

Catalog Number: 20805-1-AP	GenBank Accession Number: BC009896	Purification Method: Antigen affinity purification
Size: 150ul, Concentration: 300 µg/ml by Nanodrop and 253 µg/ml by Bradford method using BSA as the standard;	GeneID (NCBI): 27336	Recommended Dilutions: WB 1:1000-1:4000 IP 0.5-4.0 ug for IP and 1:1000-1:4000 for WB
Source: Rabbit	Full Name: HIV-1 Tat specific factor 1	IHC 1:20-1:200 IF 1:10-1:100
Isotype: IgG	Calculated MW: 755 aa, 86 kDa	
Immunogen Catalog Number: AG14744	Observed MW: 130-140 kDa	

Applications

Tested Applications: IF, IHC, IP, WB, ELISA	Positive Controls:
Cited Applications: IHC, IP, WB	WB: HeLa cells, mouse brain tissue, HepG2 cells, rat brain tissue, Jurkat cells
Species Specificity: human, mouse, rat	IP: HepG2 cells,
Cited Species: human	IHC: human breast cancer tissue, human brain tissue
	IF: HeLa cells,

Note-IHC: suggested antigen retrieval with TE buffer pH 9.0; (*) Alternatively, antigen retrieval may be performed with citrate buffer pH 6.0

Background Information

Notable Publications

Author	Pubmed ID	Journal	Application
Jiao Zhao	35597237	Mol Cell	WB
Yu-Chan Chang	34091600	Cell Death Discov	WB, IHC, IP
Xiaodong Lu	27353326	Nucleic Acids Res	

Storage

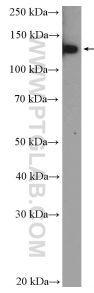
Storage:
Store at -20°C. Stable for one year after shipment.
Storage Buffer:
PBS with 0.02% sodium azide and 50% glycerol pH 7.3.
Aliquoting is unnecessary for -20°C storage

*** 20ul sizes contain 0.1% BSA

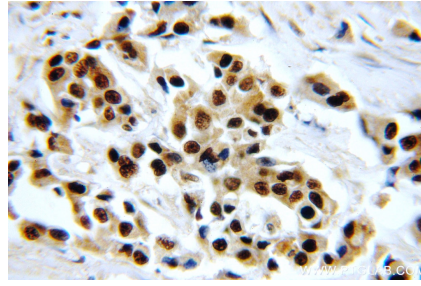
For technical support and original validation data for this product please contact:
T: 1 (888) 4PTGLAB (1-888-478-4522) (toll free in USA), or 1(312) 455-8498 (outside USA)
E: proteintech@ptglab.com
W: ptglab.com

This product is exclusively available under Proteintech Group brand and is not available to purchase from any other manufacturer.

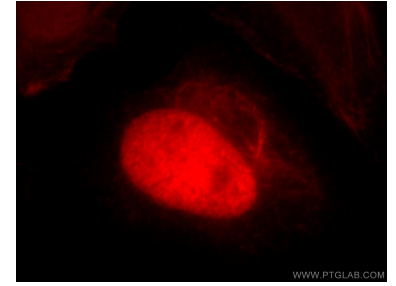
Selected Validation Data



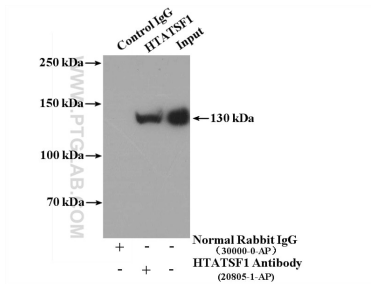
HeLa cells were subjected to SDS PAGE followed by western blot with 20805-1-AP (HTATSF1 Antibody) at dilution of 1:2000 incubated at room temperature for 1.5 hours.



Immunohistochemical analysis of paraffin-embedded human breast cancer using 20805-1-AP (HTATSF1 antibody) at dilution of 1:100 (under 40x lens).



Immunofluorescent analysis of HeLa cells, using HTATSF1 antibody 20805-1-AP at 1:25 dilution and Rhodamine-labeled goat anti-rabbit IgG (red).



IP Result of anti-HTATSF1 (IP:20805-1-AP, 4ug; Detection:20805-1-AP 1:2000) with HepG2 cells lysate 2400ug.