

For Research Use Only

SLC38A4 Polyclonal antibody

Catalog Number: 20857-1-AP **2 Publications**



Basic Information

Catalog Number: 20857-1-AP	GenBank Accession Number: BC101827	Purification Method: Antigen affinity purification
Size: 150ul , Concentration: 450 µg/ml by Nanodrop and 300 µg/ml by Bradford method using BSA as the standard;	GeneID (NCBI): 55089	Recommended Dilutions: WB 1:500-1:1000 IHC 1:20-1:200
Source: Rabbit	Full Name: solute carrier family 38, member 4	
Isotype: IgG	Calculated MW: 547 aa, 61 kDa	
Immunogen Catalog Number: AG14827	Observed MW: 61 kDa	

Applications

Tested Applications: IHC, WB, ELISA	Positive Controls: WB : A549 cells, Jurkat cells, L02 cells
Cited Applications: IF, WB	IHC : human kidney tissue, human liver cancer tissue, mouse liver tissue
Species Specificity: human	
Cited Species: human	
Note-IHC: suggested antigen retrieval with TE buffer pH 9.0; (*) Alternatively, antigen retrieval may be performed with citrate buffer pH 6.0	

Background Information

Notable Publications

Author	Pubmed ID	Journal	Application
Qingge Jia	36257236	Pathol Res Pract	WB,IF
Lijie Zhou	34185414	Clin Transl Med	WB

Storage

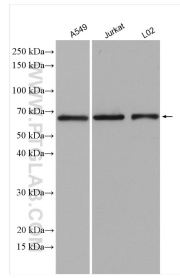
Storage:
Store at -20°C. Stable for one year after shipment.
Storage Buffer:
PBS with 0.02% sodium azide and 50% glycerol pH 7.3.
Aliquoting is unnecessary for -20°C storage

*** 20ul sizes contain 0.1% BSA

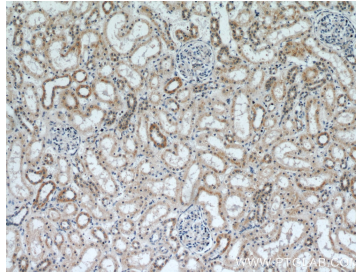
For technical support and original validation data for this product please contact:
T: 1 (888) 4PTGLAB (1-888-478-4522) (toll free in USA), or 1(312) 455-8498 (outside USA)
E: proteintech@ptglab.com
W: ptglab.com

This product is exclusively available under Proteintech Group brand and is not available to purchase from any other manufacturer.

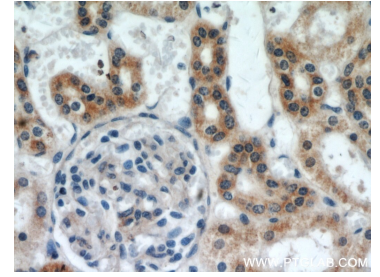
Selected Validation Data



Various lysates were subjected to SDS PAGE followed by western blot with 20857-1-AP (SLC38A4 antibody) at dilution of 1:600 incubated at room temperature for 1.5 hours.



Immunohistochemical analysis of paraffin-embedded human kidney using 20857-1-AP (SLC38A4 antibody) at dilution of 1:50 (under 10x lens).



Immunohistochemical analysis of paraffin-embedded human kidney using 20857-1-AP (SLC38A4 antibody) at dilution of 1:50 (under 40x lens).