

For Research Use Only

C1orf92 Polyclonal antibody

Catalog Number: 21031-1-AP



Basic Information

Catalog Number: 21031-1-AP	GenBank Accession Number: BC033790	Purification Method: Antigen affinity purification
Size: 150ul , Concentration: 300 µg/ml by Nanodrop and 240 µg/ml by Bradford method using BSA as the standard;	GeneID (NCBI): 149499	Recommended Dilutions: WB 1:200-1:1000 IF 1:20-1:200
Source: Rabbit	Full Name: chromosome 1 open reading frame 92	
Isotype: IgG	Calculated MW: 559 aa, 62 kDa	
Immunogen Catalog Number: AG15344	Observed MW: 62 kDa	

Applications

Tested Applications: IF, WB, ELISA	Positive Controls:
Species Specificity: human	WB : HeLa cells, IF : HeLa cells,

Background Information

Storage

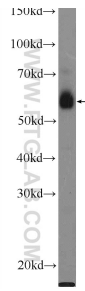
Storage:
Store at -20°C. Stable for one year after shipment.
Storage Buffer:
PBS with 0.02% sodium azide and 50% glycerol pH 7.3.
Aliquoting is unnecessary for -20°C storage

*** 20ul sizes contain 0.1% BSA

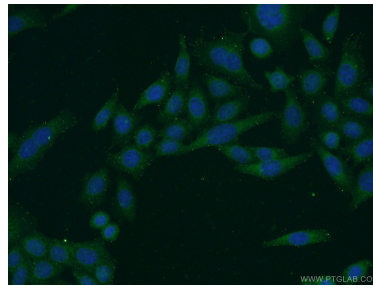
For technical support and original validation data for this product please contact:
T: 1 (888) 4PTGLAB (1-888-478-4522) (toll free in USA), or 1(312) 455-8498 (outside USA)
E: proteintech@ptglab.com
W: ptglab.com

This product is exclusively available under Proteintech Group brand and is not available to purchase from any other manufacturer.

Selected Validation Data



HeLa cells were subjected to SDS PAGE followed by western blot with 21031-1-AP (C1orf92 Antibody) at dilution of 1:300 incubated at room temperature for 1.5 hours.



Immunofluorescent analysis of HeLa cells using 21031-1-AP (C1orf92 antibody) at dilution of 1:50 and Alexa Fluor 488-conjugated AffiniPure Goat Anti-Rabbit IgG(H+L).