

For Research Use Only

LILRA4 Polyclonal antibody

Catalog Number: 21153-1-AP



Basic Information

Catalog Number:

21153-1-AP

Size:

150ul , Concentration: 350 µg/ml by Nanodrop;

Source:

Rabbit

Isotype:

IgG

Immunogen Catalog Number:

AG15721

GenBank Accession Number:

BC109198

GeneID (NCBI):

23547

UNIPROT ID:

P59901

Full Name:

leukocyte immunoglobulin-like receptor, subfamily A (with TM domain), member 4

Calculated MW:

499 aa, 55 kDa

Observed MW:

48-55 kDa

Purification Method:

Antigen affinity purification

Recommended Dilutions:

WB 1:500-1:1000

Applications

Tested Applications:

WB, ELISA

Species Specificity:

human, mouse

Positive Controls:

WB : mouse spleen tissue, HL-60 cells, L02 cells

Storage

Storage:

Store at -20°C. Stable for one year after shipment.

Storage Buffer:

PBS with 0.02% sodium azide and 50% glycerol pH 7.3.

Aliquoting is unnecessary for -20°C storage

*** 20ul sizes contain 0.1% BSA

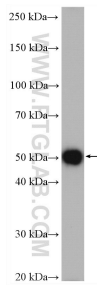
For technical support and original validation data for this product please contact:

T: 1 (888) 4PTGLAB (1-888-478-4522) (toll free in USA), or 1(312) 455-8498 (outside USA)

E: proteintech@ptglab.com
W: ptglab.com

This product is exclusively available under Proteintech Group brand and is not available to purchase from any other manufacturer.

Selected Validation Data



mouse spleen tissue were subjected to SDS PAGE followed by western blot with 21153-1-AP (LILRA4 antibody) at dilution of 1:500 incubated at room temperature for 1.5 hours.