

For Research Use Only

NUDCD2 Polyclonal antibody

Catalog Number: 21205-1-AP



Basic Information

Catalog Number: 21205-1-AP	GenBank Accession Number: BC017934	Purification Method: Antigen affinity purification
Size: 150ul , Concentration: 450 µg/ml by Nanodrop and 267 µg/ml by Bradford method using BSA as the standard;	GeneID (NCBI): 134492	Recommended Dilutions: WB 1:500-1:3000 IP 0.5-4.0 ug for IP and 1:500-1:1000 for WB
Source: Rabbit	Full Name: NudC domain containing 2	IHC 1:200-1:800 IF 1:200-1:800
Isotype: IgG	Calculated MW: 157 aa, 18 kDa	
Immunogen Catalog Number: AG15579	Observed MW: 18 kDa	

Applications

Tested Applications:
IF, IHC, IP, WB, ELISA

Species Specificity:
human, mouse, rat

Note-IHC: suggested antigen retrieval with TE buffer pH 9.0; (*) Alternatively, antigen retrieval may be performed with citrate buffer pH 6.0

Positive Controls:

WB: human brain tissue, HEK-293 cells, HepG2 cells, human kidney tissue

IP: HepG2 cells,

IHC: human kidney tissue, human breast cancer tissue

IF: HepG2 cells, HeLa cells

Background Information

NUDCD2, also known as NudCL2, is an HSP90 cochaperone that regulates sister chromatid cohesion during mitosis. NUDCD2 also plays a role in ciliogenesis (PMID: 30368549, 34480124). NUDCD2 regulates the LIS1/dynein pathway by stabilizing LIS1 with Hsp90 chaperone (PMID: 20133715).

Storage

Storage:

Store at -20°C. Stable for one year after shipment.

Storage Buffer:

PBS with 0.02% sodium azide and 50% glycerol pH 7.3.

Aliquoting is unnecessary for -20°C storage

*** 20ul sizes contain 0.1% BSA

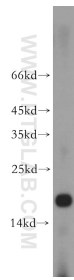
For technical support and original validation data for this product please contact:

T: 1 (888) 4PTGLAB (1-888-478-4522) (toll free in USA), or 1(312) 455-8498 (outside USA)

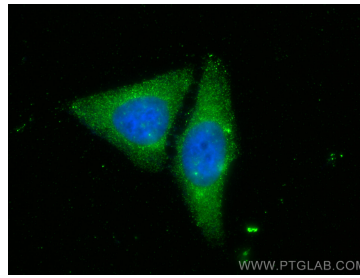
E: proteintech@ptglab.com
W: ptglab.com

This product is exclusively available under Proteintech Group brand and is not available to purchase from any other manufacturer.

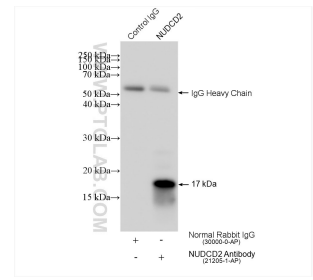
Selected Validation Data



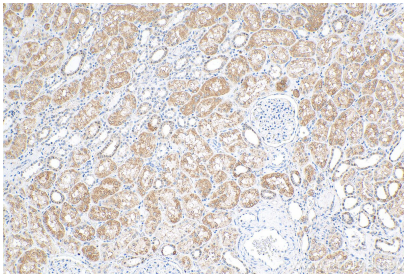
human brain tissue were subjected to SDS PAGE followed by western blot with 21205-1-AP (NUDCD2 antibody) at dilution of 1:500 incubated at room temperature for 1.5 hours.



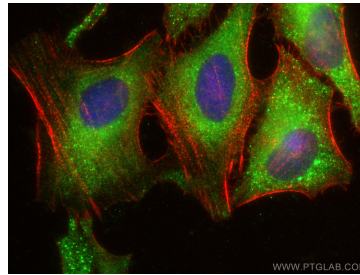
Immunofluorescent analysis of (-20°C Ethanol) fixed HepG2 cells using NUDCD2 antibody (21205-1-AP) at dilution of 1:400 and CoraLite®488-Conjugated AffiniPure Goat Anti-Rabbit IgG(H+L).



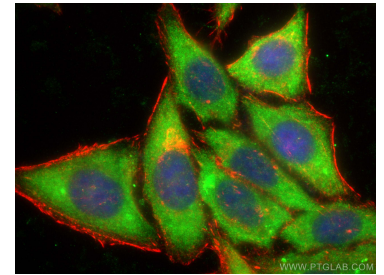
IP result of anti-NUDCD2(IP:21205-1-AP, 4ug; Detection:21205-1-AP 1:500) with HepG2 cells lysate 1080 ug.



Immunohistochemical analysis of paraffin-embedded human kidney tissue slide using 21205-1-AP (NUDCD2 antibody) at dilution of 1:400 (under 10x lens). Heat mediated antigen retrieval with Tris-EDTA buffer (pH 9.0).



Immunofluorescent analysis of (-20°C Ethanol) fixed HeLa cells using NUDCD2 antibody (21205-1-AP) at dilution of 1:400 and CoraLite®488-Conjugated AffiniPure Goat Anti-Rabbit IgG(H+L), CL594-phalloidin (red).



Immunofluorescent analysis of (-20°C Ethanol) fixed HepG2 cells using NUDCD2 antibody (21205-1-AP) at dilution of 1:400 and CoraLite®488-Conjugated AffiniPure Goat Anti-Rabbit IgG(H+L), CL594-phalloidin (red).