

For Research Use Only

# ZEB1 Polyclonal antibody

Catalog Number: 21544-1-AP

Featured Product

202 Publications



## Basic Information

### Catalog Number:

21544-1-AP

### Size:

150ul, Concentration: 700 µg/ml by Nanodrop;

### Source:

Rabbit

### Isotype:

IgG

### Immunogen Catalog Number:

AG16204

### GenBank Accession Number:

BC112392

### GeneID (NCBI):

6935

### UNIPROT ID:

P37275

### Full Name:

zinc finger E-box binding homeobox 1

### Calculated MW:

1125 aa, 124 kDa

### Observed MW:

190-210 kDa

### Purification Method:

Antigen affinity purification

### Recommended Dilutions:

WB 1:500-1:2000

IP 0.5-4.0 µg for 1.0-3.0 mg of total protein lysate

## Applications

### Tested Applications:

WB, IP, ELISA

### Cited Applications:

WB, IP, IF, IHC, CoIP, ChIP

### Species Specificity:

human, mouse

### Cited Species:

human, rat, mouse, pig

### Positive Controls:

WB: Jurkat cells, MCF-7 cells, PC-3 cells, COLO 320 cells, MDA-MB-453s cells, mouse colon tissue

IP: COLO 320 cells,

## Background Information

ZEB1(zinc-finger-enhancer binding protein 1), which is a members of the Zincfinger-Homeobox (ZFH)-family of repressors, acts as a transcriptional repressor that inhibits interleukin-2 (IL-2) gene expression. Depending on the quantity of cDNA and on the cell type, ZEB1 can enhance or repress the promoter activity of the ATP1A1 gene. Represses E-cadherin promoter and induces an epithelial-mesenchymal transition (EMT) by recruiting SMARCA4/BRG1. Represses BCL6 transcription in the presence of the corepressor CTBP1. Positively regulates neuronal differentiation. The calculated molecular weight of ZEB1 is 124 kDa, but the post phosphorylation of protein is about 190-210 kDa. This is a rabbit polyclonal antibody raised against part of the full length of ZEB1 of human.

## Notable Publications

Author	Pubmed ID	Journal	Application
Caixia Yu	36181978	Virus Res	WB
Chenlong Li	31558707	Cell Death Dis	WB
Duo Shi	34555439	Virus Res	WB

## Storage

### Storage:

Store at -20°C. Stable for one year after shipment.

### Storage Buffer:

PBS with 0.02% sodium azide and 50% glycerol pH 7.3.

Aliquoting is unnecessary for -20°C storage

\*\*\* 20ul sizes contain 0.1% BSA

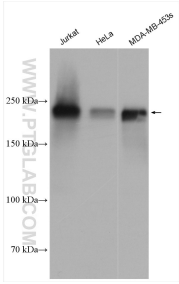
For technical support and original validation data for this product please contact:

T: 1 (888) 4PTGLAB (1-888-478-4522) (toll free in USA), or 1(312) 455-8498 (outside USA)

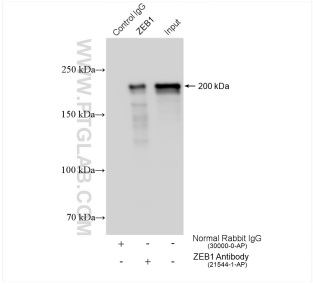
E: [proteintech@ptglab.com](mailto:proteintech@ptglab.com)  
W: [ptglab.com](http://ptglab.com)

This product is exclusively available under Proteintech Group brand and is not available to purchase from any other manufacturer.

Selected Validation Data



Various lysates were subjected to SDS PAGE followed by western blot with 21544-1-AP (ZEB1 antibody) at dilution of 1:1000 incubated at room temperature for 1.5 hours.



IP result of anti-ZEB1 (IP:21544-1-AP, 4ug; Detection:21544-1-AP 1:8000) with COLO 320 cells lysate 1320 ug.