

For Research Use Only

ARPC5L Polyclonal antibody

Catalog Number: 22025-1-AP **1 Publications**



Basic Information

Catalog Number: 22025-1-AP	GenBank Accession Number: BC000798	Purification Method: Antigen affinity purification
Size: 150ul, Concentration: 600 µg/ml by Nanodrop;	GeneID (NCBI): 81873	Recommended Dilutions: WB 1:1000-1:4000 IP 0.5-4.0 ug for IP and 1:500-1:2000 for WB
Source: Rabbit	Full Name: actin related protein 2/3 complex, subunit 5-like	IHC 1:20-1:200 IF 1:10-1:100
Isotype: IgG	Calculated MW: 17 kDa	
Immunogen Catalog Number: AG16881	Observed MW: 17-20 kDa	

Applications

Tested Applications:
FC, IF, IHC, IP, WB, ELISA

Cited Applications:
IF, WB

Species Specificity:
human, mouse, rat

Cited Species:
human

Note-IHC: suggested antigen retrieval with TE buffer pH 9.0; (*) Alternatively, antigen retrieval may be performed with citrate buffer pH 6.0

Positive Controls:

WB: mouse brain tissue, human brain tissue, NIH/3T3 cells, mouse lung tissue, rat brain tissue

IP: mouse brain tissue,

IHC: human placenta tissue, human cerebellum tissue

IF: MCF-7 cells,

Background Information

ARPC5L, also known as ARC16-2, belongs to the ARPC5 family. ARPC5L is involved in Arp2/3 complex-mediated actin nucleation and together with an activating nucleation-promoting factor (NPF) mediates the formation of branched actin networks. ARPC5L-containing Arp2/3 complexes are required for the peripheral positioning of nuclei in myofibers (PMID: 28892082). The molecular mass of ARPC5L is 17-20 kDa.

Notable Publications

Author	Pubmed ID	Journal	Application
Jason W. Lui	34468072	Pigment Cell Melanoma Res	WB,IF

Storage

Storage:

Store at -20°C. Stable for one year after shipment.

Storage Buffer:

PBS with 0.02% sodium azide and 50% glycerol pH 7.3.

Aliquoting is unnecessary for -20°C storage

***** 20ul sizes contain 0.1% BSA**

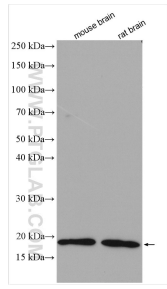
For technical support and original validation data for this product please contact:

T: 1 (888) 4PTGLAB (1-888-478-4522) (toll free in USA), or 1(312) 455-8498 (outside USA)

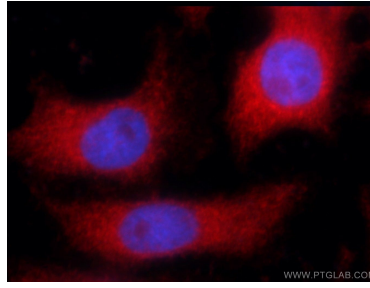
E: proteintech@ptglab.com
W: ptglab.com

This product is exclusively available under Proteintech Group brand and is not available to purchase from any other manufacturer.

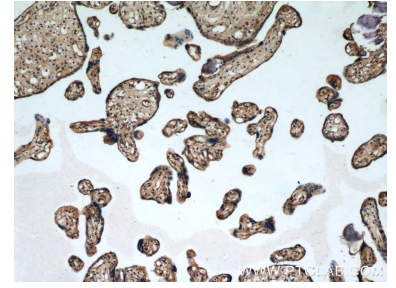
Selected Validation Data



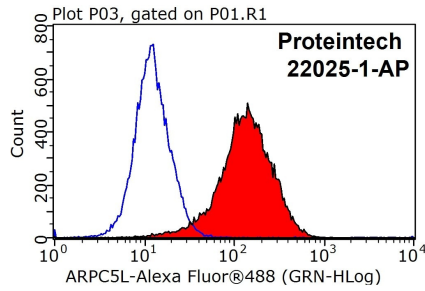
Various lysates were subjected to SDS PAGE followed by western blot with 22025-1-AP (ARPC5L antibody) at dilution of 1:2000 incubated at room temperature for 1.5 hours.



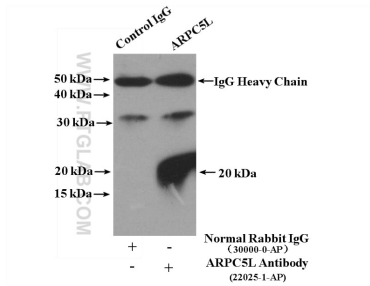
Immunofluorescent analysis of MCF-7 cells using 22025-1-AP (ARPC5L antibody) at dilution of 1:25 and Rhodamine-Goat anti-Rabbit IgG.



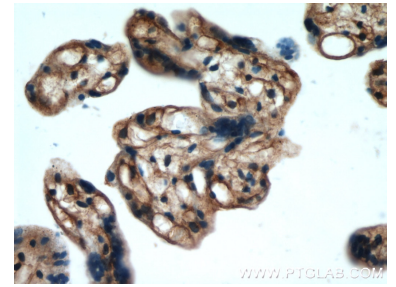
Immunohistochemical analysis of paraffin-embedded human placenta using 22025-1-AP (ARPC5L antibody) at dilution of 1:50 (under 10x lens).



1X10⁶ MCF-7 cells were stained with 0.2ug ARPC5L antibody (22025-1-AP, red) and control antibody (blue). Fixed with 90% MeOH blocked with 3% BSA (30 min). Alexa Fluor 488-conjugated AffiniPure Goat Anti-Rabbit IgG(H+L) with dilution 1:1000.



IP Result of anti-ARPC5L (IP:22025-1-AP, 4ug; Detection:22025-1-AP 1:1000) with mouse brain tissue lysate 4000ug.



Immunohistochemical analysis of paraffin-embedded human placenta using 22025-1-AP (ARPC5L antibody) at dilution of 1:50 (under 40x lens).