

Kindlin 1 Polyclonal antibody

Catalog Number: 22215-1-AP

Featured Product

5 Publications

Basic Information

Catalog Number: 22215-1-AP	GenBank Accession Number: BC035882	Purification Method: Antigen affinity purification
Size: 150ul, Concentration: 240 µg/ml by Nanodrop and 193 µg/ml by Bradford method using BSA as the standard;	GeneID (NCBI): 55612	Recommended Dilutions: WB 1:300-1:1000 IHC 1:20-1:200 IF 1:10-1:100
Source: Rabbit	Full Name: fermitin family homolog 1 (Drosophila)	
Isotype: IgG	Calculated MW: 677 aa, 77 kDa	
Immunogen Catalog Number: AG17543	Observed MW: 70-77 kDa	

Applications

Tested Applications: IF, IHC, WB, ELISA	Positive Controls:
Cited Applications: IF, IHC, WB	WB: mouse kidney tissue, COLO 320 cells, HEK-293 cells
Species Specificity: human, mouse	IHC: human pancreas tissue, human colon cancer tissue, human pancreas cancer tissue
Cited Species: human, rat, mouse	IF: HEK-293 cells,
Note-IHC: suggested antigen retrieval with TE buffer pH 9.0; (*) Alternatively, antigen retrieval may be performed with citrate buffer pH 6.0	

Background Information

Kindlin-1 is a FERM domain containing adaptor protein that is found predominantly at cell-extracellular matrix adhesions where it binds to β -integrin subunits and is required for integrin activation. Loss of function mutations in the FERMT1 gene which encodes Kindlin-1 leads to the development of Kindler Syndrome (KS) an autosomal recessive skin disorder characterized by skin blistering, photosensitivity, and predisposition to aggressive squamous cell carcinoma (SCC).

Notable Publications

Author	Pubmed ID	Journal	Application
Baisong Zhao	34618385	Eur J Neurosci	WB
Congcong Shen	28290610	Int J Mol Med	IHC, IF
Lingling Li	35144617	Cancer Cell Int	WB, IHC

Storage

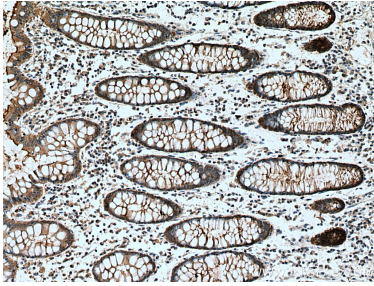
Storage:
Store at -20°C. Stable for one year after shipment.
Storage Buffer:
PBS with 0.02% sodium azide and 50% glycerol pH 7.3.
Aliquoting is unnecessary for -20°C storage

*** 20ul sizes contain 0.1% BSA

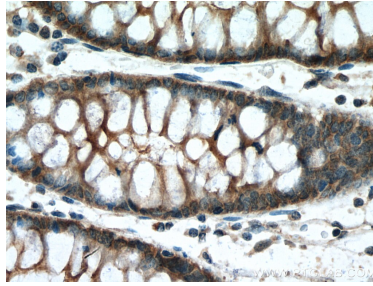
For technical support and original validation data for this product please contact:
T: 1 (888) 4PTGLAB (1-888-478-4522) (toll free in USA), or 1(312) 455-8498 (outside USA)
E: proteintech@ptglab.com
W: ptglab.com

This product is exclusively available under Proteintech Group brand and is not available to purchase from any other manufacturer.

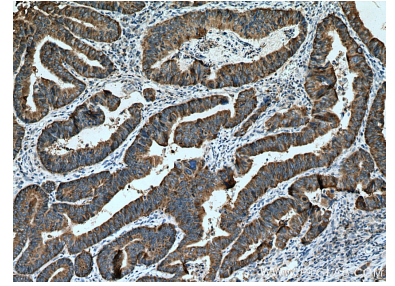
Selected Validation Data



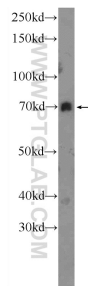
Immunohistochemical analysis of paraffin-embedded human colon cancer tissue slide using 22215-1-AP (FERMT1 antibody) at dilution of 1:200 (under 10x lens). Heat mediated antigen retrieval with Tris-EDTA buffer (pH 9.0).



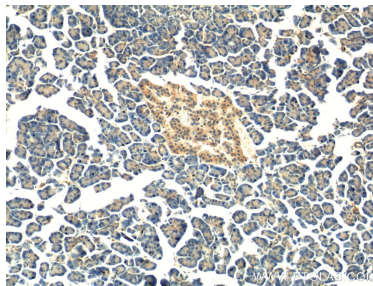
Immunohistochemical analysis of paraffin-embedded human colon cancer tissue slide using 22215-1-AP (FERMT1 antibody) at dilution of 1:200 (under 40x lens). Heat mediated antigen retrieval with Tris-EDTA buffer (pH 9.0).



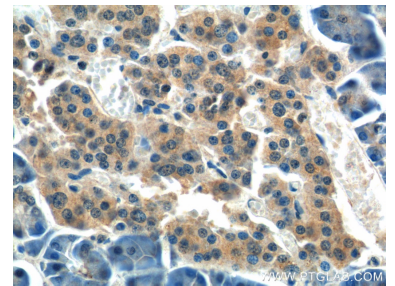
Immunohistochemical analysis of paraffin-embedded human colon cancer tissue slide using 22215-1-AP (FERMT1 antibody) at dilution of 1:200 (under 10x lens). Heat mediated antigen retrieval with Tris-EDTA buffer (pH 9.0).



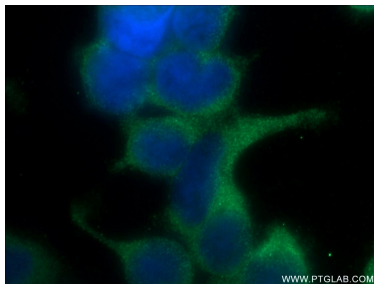
mouse kidney tissue were subjected to SDS PAGE followed by western blot with 22215-1-AP (FERMT1 Antibody) at dilution of 1:300 incubated at room temperature for 1.5 hours.



Immunohistochemical analysis of paraffin-embedded human pancreas tissue slide using 22215-1-AP (FERMT1 Antibody) at dilution of 1:50 (under 10x lens).



Immunohistochemical analysis of paraffin-embedded human pancreas tissue slide using 22215-1-AP (FERMT1 Antibody) at dilution of 1:50 (under 40x lens).



Immunofluorescent analysis of HEK-293 cells using 22215-1-AP (FERMT1 antibody) at dilution of 1:25 and Alexa Fluor 488-conjugated AffiniPure Goat Anti-Rabbit IgG(H+L).