

For Research Use Only

# CREBBP Polyclonal antibody

Catalog Number: 22277-1-AP

3 Publications



## Basic Information

### Catalog Number:

22277-1-AP

### Size:

150ul, Concentration: 450 ug/ml by Nanodrop;

### Source:

Rabbit

### Isotype:

IgG

### GenBank Accession Number:

NM\_004380

### GeneID (NCBI):

1387

### UNIPROT ID:

Q92793

### Full Name:

CREB binding protein

### Calculated MW:

265 kDa

### Observed MW:

290 kDa

### Purification Method:

Antigen affinity purification

### Recommended Dilutions:

WB: 1:1000-1:4000

IHC: 1:150-1:600

IF/ICC: 1:400-1:1600

FC (Intra): 0.25 ug per 10<sup>6</sup> cells in a 100 µl suspension

## Applications

### Tested Applications:

WB, IHC, IF/ICC, ELISA

### Cited Applications:

WB, IHC

### Species Specificity:

human

### Cited Species:

human

### Positive Controls:

WB : HeLa cells, Jurkat cells

IHC : human prostate cancer tissue,

IF/ICC : HeLa cells,

FC (Intra) : HeLa cells,

**Note-IHC: suggested antigen retrieval with TE buffer pH 9.0; (\*) Alternatively, antigen retrieval may be performed with citrate buffer pH 6.0**

## Background Information

The acetyltransferase CREB-binding protein (CREBBP; also known as CBP or KAT2A) and E1A-binding protein P300 (EP300; also known as P300 or KAT2B) are two closely related regulators. Both are widely expressed within and outside the hematopoietic system and serve as tumor activators or suppressors depending on the situation. CREBBP/EP300 regulate various key physiological functions, including cell apoptosis, proliferation and differentiation, DNA repair, and somatic cell reprogramming.

## Notable Publications

Author	Pubmed ID	Journal	Application
Yiran Zhouguo	39969158	J Cell Mol Med	WB,IHC
Shaoyu Tu	39115433	J Virol	WB
Tianhui Wu	38179762	Front Biosci (Landmark Ed)	WB

## Storage

### Storage:

Store at -20°C. Stable for one year after shipment.

### Storage Buffer:

PBS with 0.02% sodium azide and 50% glycerol, pH7.3

Aliquoting is unnecessary for -20°C storage

\*\*\* 20ul sizes contain 0.1% BSA

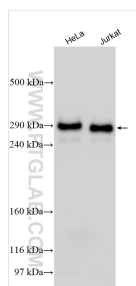
For technical support and original validation data for this product please contact:

T: 1 (888) 4PTGLAB (1-888-478-4522) (toll free in USA), or 1(312) 455-8498 (outside USA)

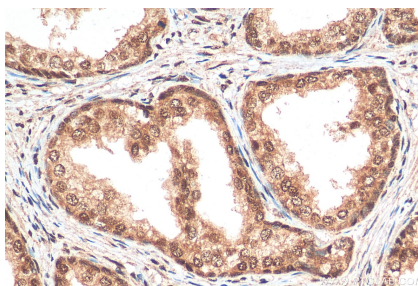
E: [proteintech@ptglab.com](mailto:proteintech@ptglab.com)  
W: [ptglab.com](http://ptglab.com)

This product is exclusively available under Proteintech Group brand and is not available to purchase from any other manufacturer.

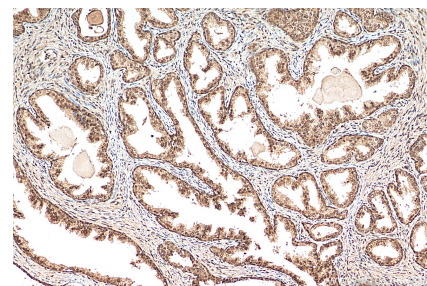
## Selected Validation Data



Various lysates were subjected to SDS PAGE followed by western blot with 22277-1-AP (CREBBP antibody) at dilution of 1:2000 incubated at room temperature for 1.5 hours.



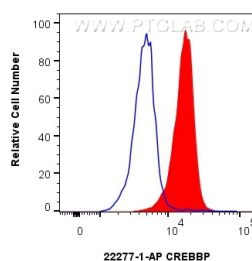
Immunohistochemical analysis of paraffin-embedded human prostate cancer tissue slide using 22277-1-AP (CREBBP antibody) at dilution of 1:300 (under 40x lens). Heat mediated antigen retrieval with Tris-EDTA buffer (pH 9.0).



Immunohistochemical analysis of paraffin-embedded human prostate cancer tissue slide using 22277-1-AP (CREBBP antibody) at dilution of 1:300 (under 10x lens). Heat mediated antigen retrieval with Tris-EDTA buffer (pH 9.0).



Immunofluorescent analysis of (4% PFA) fixed HeLa cells using CREBBP antibody (22277-1-AP) at dilution of 1:800 and CoraLite®488-Conjugated AffiniPure Goat Anti-Rabbit IgG(H+L).



1x10<sup>6</sup> HeLa cells were intracellularly stained with 0.25 ug CREBBP Polyclonal antibody (22277-1-AP) and CoraLite®488-Conjugated Goat Anti-Rabbit IgG(H+L) (SA00013-2)(red), or 0.25 ug Rabbit IgG control Rabbit PolyAb (30000-0-AP) (blue). Cells were fixed and permeabilized with Transcription Factor Staining Buffer Kit (PF00011).