

For Research Use Only

# ABLIM2 Polyclonal antibody

Catalog Number: 22433-1-AP



## Basic Information

<b>Catalog Number:</b> 22433-1-AP	<b>GenBank Accession Number:</b> BC122567	<b>Purification Method:</b> Antigen affinity purification
<b>Size:</b> 150ul , Concentration: 400 µg/ml by Nanodrop and 273 µg/ml by Bradford method using BSA as the standard;	<b>GeneID (NCBI):</b> 84448	<b>Recommended Dilutions:</b> WB 1:500-1:2000 IP 0.5-4.0 ug for IP and 1:500-1:2000 for WB IHC 1:50-1:500
<b>Source:</b> Rabbit	<b>Full Name:</b> actin binding LIM protein family, member 2	
<b>Isotype:</b> IgG	<b>Calculated MW:</b> 611 aa, 68 kDa	
<b>Immunogen Catalog Number:</b> AG18198	<b>Observed MW:</b> 60-70 kDa	

## Applications

### Tested Applications:

IHC, IP, WB, ELISA

### Species Specificity:

human, mouse, rat

**Note-IHC: suggested antigen retrieval with TE buffer pH 9.0; (\*) Alternatively, antigen retrieval may be performed with citrate buffer pH 6.0**

### Positive Controls:

WB : mouse brain tissue, mouse skeletal muscle tissue

IP : mouse brain tissue,

IHC : mouse skeletal muscle tissue, human skeletal muscle tissue, human kidney tissue

## Background Information

### Storage

#### Storage:

Store at -20°C. Stable for one year after shipment.

#### Storage Buffer:

PBS with 0.02% sodium azide and 50% glycerol pH 7.3.

Aliquoting is unnecessary for -20°C storage

\*\*\* 20ul sizes contain 0.1% BSA

For technical support and original validation data for this product please contact:

T: 1 (888) 4PTGLAB (1-888-478-4522) (toll free in USA), or 1(312) 455-8498 (outside USA)

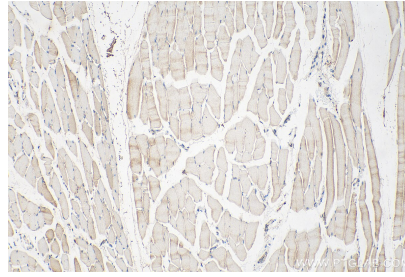
E: proteintech@ptglab.com  
W: ptglab.com

This product is exclusively available under Proteintech Group brand and is not available to purchase from any other manufacturer.

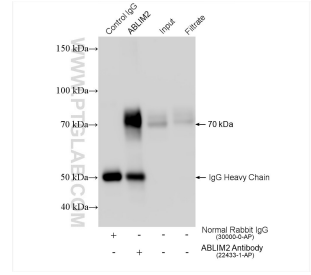
## Selected Validation Data



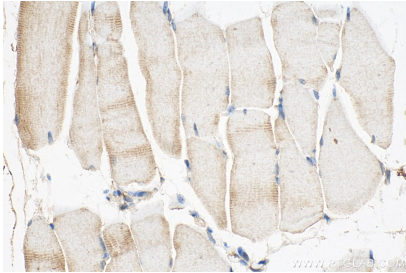
mouse brain tissue were subjected to SDS PAGE followed by western blot with 22433-1-AP (ABLIM2 antibody) at dilution of 1:1000 incubated at room temperature for 1.5 hours.



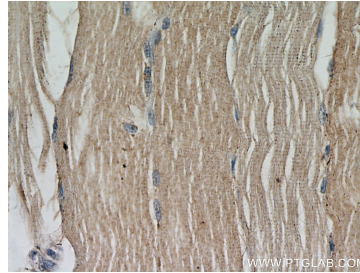
Immunohistochemical analysis of paraffin-embedded mouse skeletal muscle tissue slide using 22433-1-AP (ABLIM2 antibody) at dilution of 1:200 (under 10x lens). Heat mediated antigen retrieval with Tris-EDTA buffer (pH 9.0).



IP result of anti-ABLIM2(IP:22433-1-AP, 4ug; Detection:22433-1-AP 1:1000) with mouse brain tissue lysate 1280 ug.



Immunohistochemical analysis of paraffin-embedded mouse skeletal muscle tissue slide using 22433-1-AP (ABLIM2 antibody) at dilution of 1:200 (under 40x lens). Heat mediated antigen retrieval with Tris-EDTA buffer (pH 9.0).



Immunohistochemical analysis of paraffin-embedded human skeletal muscle slide using 22433-1-AP (ABLIM2 Antibody) at dilution of 1:50.