

SORLA Polyclonal antibody

Catalog Number: 22592-1-AP

3 Publications

Basic Information

Catalog Number:

22592-1-AP

Size:

150ul, Concentration: 500 µg/ml by Nanodrop;

Source:

Rabbit

Isotype:

IgG

Immunogen Catalog Number:

AG18445

GenBank Accession Number:

BC137171

GeneID (NCBI):

6653

Full Name:

sortilin-related receptor, L(DLR class)
A repeats-containing

Calculated MW:

2214 aa, 248 kDa

Observed MW:

300 kDa

Purification Method:

Antigen Affinity purified

Recommended Dilutions:

WB 1:500-1:1000

IP 0.5-4.0 µg for IP and 1:500-1:1000

for WB

IHC 1:20-1:200

Applications

Tested Applications:

IHC, IP, WB, ELISA

Cited Applications:

CoIP, IF, IHC, IP, WB

Species Specificity:

human, mouse, rat

Cited Species:

human, mouse

Positive Controls:

WB: mouse brain tissue,

IP: mouse brain tissue,

IHC: human brain tissue, rat brain tissue

Note-IHC: suggested antigen retrieval with TE buffer pH 9.0; (*) Alternatively, antigen retrieval may be performed with citrate buffer pH 6.0

Background Information

SorLA also known as SorL1 or LR11, is a multiligand receptor belonging to the LDL receptor superfamily. It is also a member of vacuolar protein sorting-10 (Vps10) family and is enriched in the brain. SorLA acts as a sorting receptor for APP and prevents amyloidogenic processing of APP. Downregulation of SorLA has been found in patients with sporadic Alzheimer disease (AD). Currently SorLA has emerged as a potential target for AD therapy. (25404298)

Notable Publications

Author	Pubmed ID	Journal	Application
Chenlu Xu	36113572	Environ Res	WB
Yunjia Chen	25404298	Proc Natl Acad Sci U S A	WB, IP
Zhen Zheng	37145301	Funct Integr Genomics	WB, IHC, IF, CoIP

Storage

Storage:

Store at -20°C. Stable for one year after shipment.

Storage Buffer:

PBS with 0.02% sodium azide and 50% glycerol pH 7.3.

Aliquoting is unnecessary for -20°C storage

*** 20ul sizes contain 0.1% BSA

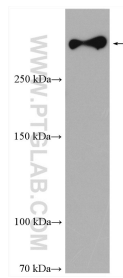
For technical support and original validation data for this product please contact:

T: 1 (888) 4PTGLAB (1-888-478-4522) (toll free in USA), or 1(312) 455-8498 (outside USA)

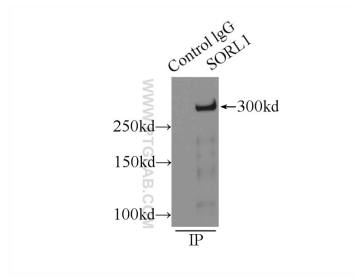
E: proteintech@ptglab.com
W: ptglab.com

This product is exclusively available under Proteintech Group brand and is not available to purchase from any other manufacturer.

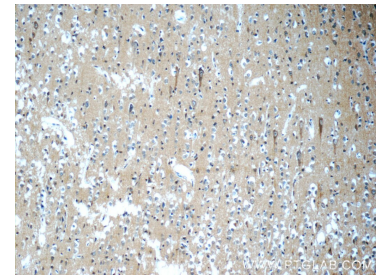
Selected Validation Data



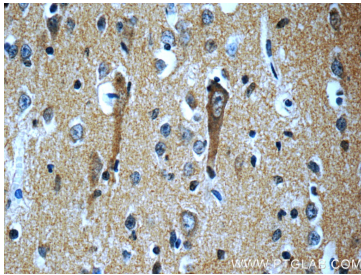
mouse brain tissue were subjected to SDS PAGE followed by western blot with 22592-1-AP (SORLA antibody) at dilution of 1:500 incubated at room temperature for 1.5 hours.



IP Result of anti-SORLA (IP:22592-1-AP, 5ug; Detection:22592-1-AP 1:500) with mouse brain tissue lysate 10000ug.



Immunohistochemical analysis of paraffin-embedded human brain slide using 22592-1-AP (SORLA antibody at dilution of 1:50.



Immunohistochemical analysis of paraffin-embedded human brain slide using 22592-1-AP (SORLA antibody at dilution of 1:50.