

VEGFC Polyclonal antibody

Catalog Number: 22601-1-AP

28 Publications

Basic Information

Catalog Number: 22601-1-AP	GenBank Accession Number: BC035212	Purification Method: Antigen affinity purification
Size: 150ul , Concentration: 700 µg/ml by Nanodrop;	GeneID (NCBI): 7424	Recommended Dilutions: WB 1:500-1:2000 IHC 1:50-1:500 IF 1:20-1:200
Source: Rabbit	Full Name: vascular endothelial growth factor C	
Isotype: IgG	Calculated MW: 419 aa, 47 kDa	
Immunogen Catalog Number: AG18182	Observed MW: 47 kDa	

Applications

Tested Applications: IF, IHC, WB, ELISA	Positive Controls:
Cited Applications: IF, IHC, WB	WB : MCF-7 cells, RAW 264.7 cells, HCT 116 cells, SW480 cells
Species Specificity: human, mouse	IHC : human prostate cancer tissue, human lung cancer tissue
Cited Species: human, mouse	IF : RAW 264.7 cells,
Note-IHC: suggested antigen retrieval with TE buffer pH 9.0; (*) Alternatively, antigen retrieval may be performed with citrate buffer pH 6.0	

Background Information

VEGFC is a member of the platelet-derived growth factor / vascular endothelial growth factor (PDGF/VEGF) family. The main function of VEGFC is to promote the growth of lymphatic vessels (lymphangiogenesis). It acts on lymphatic endothelial cells (LECs) primarily via its receptor VEGFR-3 promoting survival, growth, and migration.

Notable Publications

Author	Pubmed ID	Journal	Application
Lan Wang	36076297	Fluids Barriers CNS	WB
Chunhua Wei	31498117	Aging (Albany NY)	WB
Lin Tian	36056333	BMC Complement Med Ther	IHC

Storage

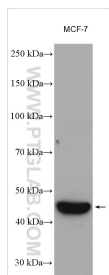
Storage:
Store at -20°C. Stable for one year after shipment.
Storage Buffer:
PBS with 0.02% sodium azide and 50% glycerol pH 7.3.
Aliquoting is unnecessary for -20°C storage

*** 20ul sizes contain 0.1% BSA

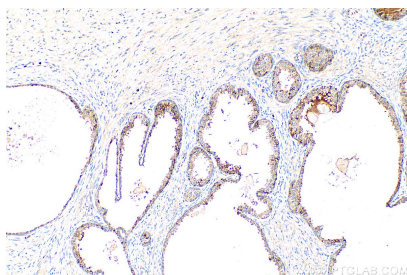
For technical support and original validation data for this product please contact:
T: 1 (888) 4PTGLAB (1-888-478-4522) (toll free in USA), or 1(312) 455-8498 (outside USA)
E: proteintech@ptglab.com
W: ptglab.com

This product is exclusively available under Proteintech Group brand and is not available to purchase from any other manufacturer.

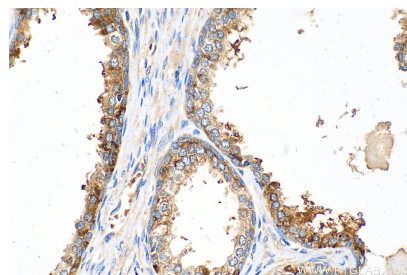
Selected Validation Data



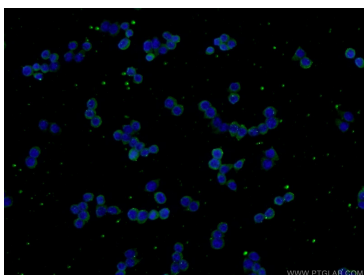
MCF-7 cells were subjected to SDS PAGE followed by western blot with 22601-1-AP (VEGFC antibody) at dilution of 1:1000 incubated at room temperature for 1.5 hours.



Immunohistochemical analysis of paraffin-embedded human prostate cancer tissue slide using 22601-1-AP (VEGFC antibody) at dilution of 1:200 (under 10x lens). Heat mediated antigen retrieval with Tris-EDTA buffer (pH 9.0).



Immunohistochemical analysis of paraffin-embedded human prostate cancer tissue slide using 22601-1-AP (VEGFC antibody) at dilution of 1:200 (under 40x lens). Heat mediated antigen retrieval with Tris-EDTA buffer (pH 9.0).



Immunofluorescent analysis of RAW 264.7 cells using 22601-1-AP (VEGFC antibody) at dilution of 1:50 and Alexa Fluor 488-conjugated AffiniPure Goat Anti-Rabbit IgG(H+L).