

For Research Use Only

CSN1S1 Polyclonal antibody

Catalog Number: 22648-1-AP **1 Publications**



Basic Information

Catalog Number: 22648-1-AP	GenBank Accession Number: BC128227	Purification Method: Antigen affinity purification
Size: 150ul , Concentration: 900 µg/ml by Nanodrop and 400 µg/ml by Bradford method using BSA as the standard;	GeneID (NCBI): 1446	Recommended Dilutions: WB 1:5000-1:50000
Source: Rabbit	Full Name: casein alpha s1	
Isotype: IgG	Calculated MW: 185 aa, 22 kDa	
Immunogen Catalog Number: AG18529	Observed MW: 21-24 kDa	

Applications

Tested Applications: WB, ELISA	Positive Controls: WB : human milk,
Cited Applications: WB	
Species Specificity: human	
Cited Species: human	

Background Information

Notable Publications

Author	Pubmed ID	Journal	Application
Suhua Chen	35565755	Nutrients	WB

Storage

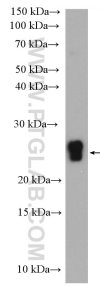
Storage:
Store at -20°C. Stable for one year after shipment.
Storage Buffer:
PBS with 0.02% sodium azide and 50% glycerol pH 7.3.
Aliquoting is unnecessary for -20°C storage

***** 20ul sizes contain 0.1% BSA**

For technical support and original validation data for this product please contact:
T: 1 (888) 4PTGLAB (1-888-478-4522) (toll free in USA), or 1(312) 455-8498 (outside USA)
E: proteintech@ptglab.com
W: ptglab.com

This product is exclusively available under Proteintech Group brand and is not available to purchase from any other manufacturer.

Selected Validation Data



human milk were subjected to SDS PAGE followed by western blot with 22648-1-AP (CSN1S1 antibody) at dilution of 1:20000 incubated at room temperature for 1.5 hours.